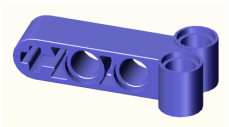
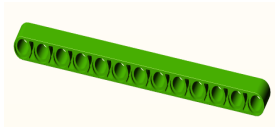


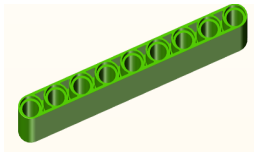
Large Crane



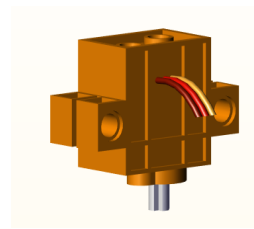
x4



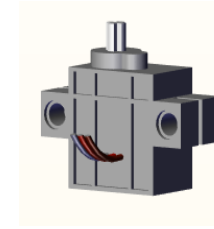
x2(13 holes)



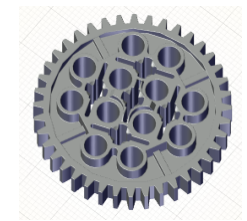
x8(9 holes)



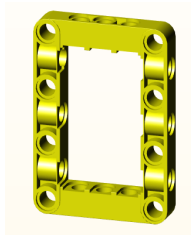
x1(360 ° Servo)



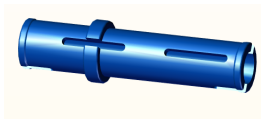
x1(270 ° Servo)



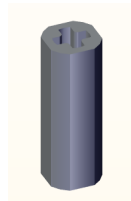
x4



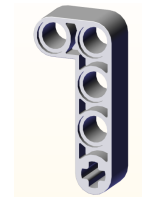
x10



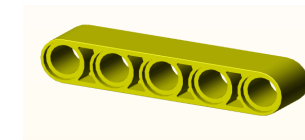
x21



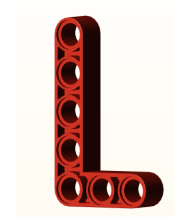
x1



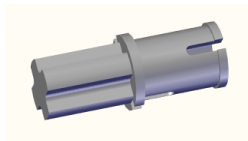
x4



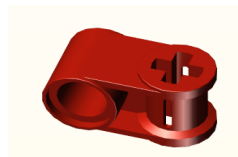
x2(5 holes)



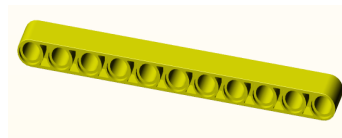
x8



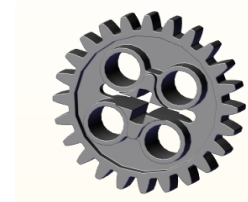
x3



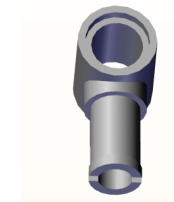
x3



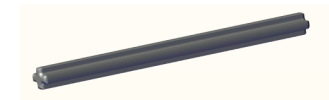
x8(11 holes)



x3



x4



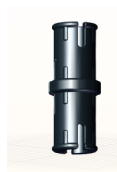
x1(6.4cm)



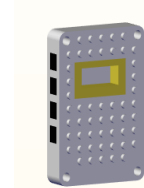
x2



x1



x85



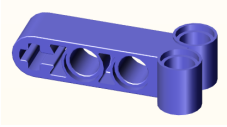
x1



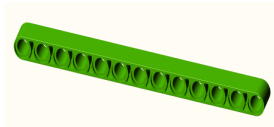
x1



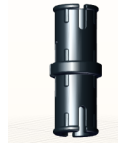
x1



x4

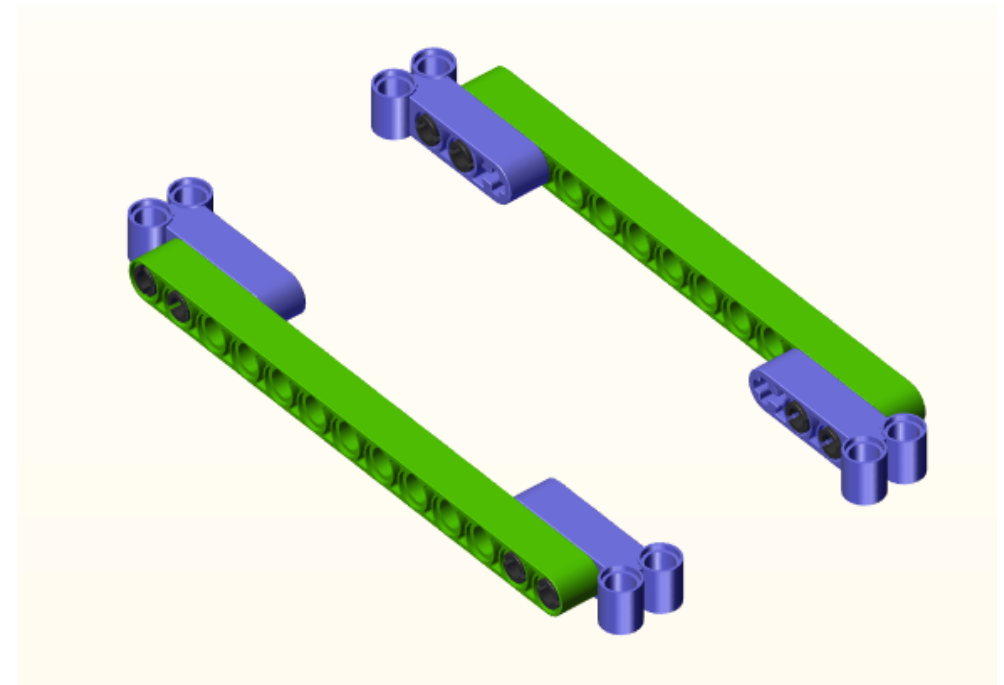
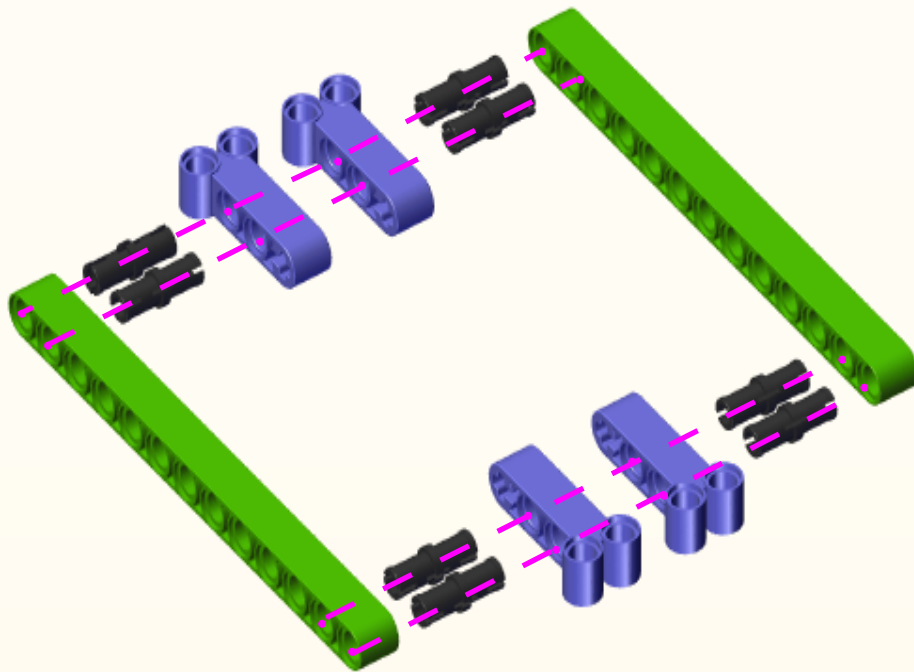


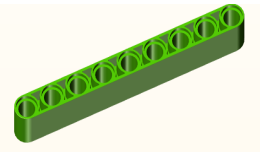
x2(13 holes)



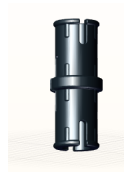
x8

Note : The color of the building blocks is subject to the actual object.

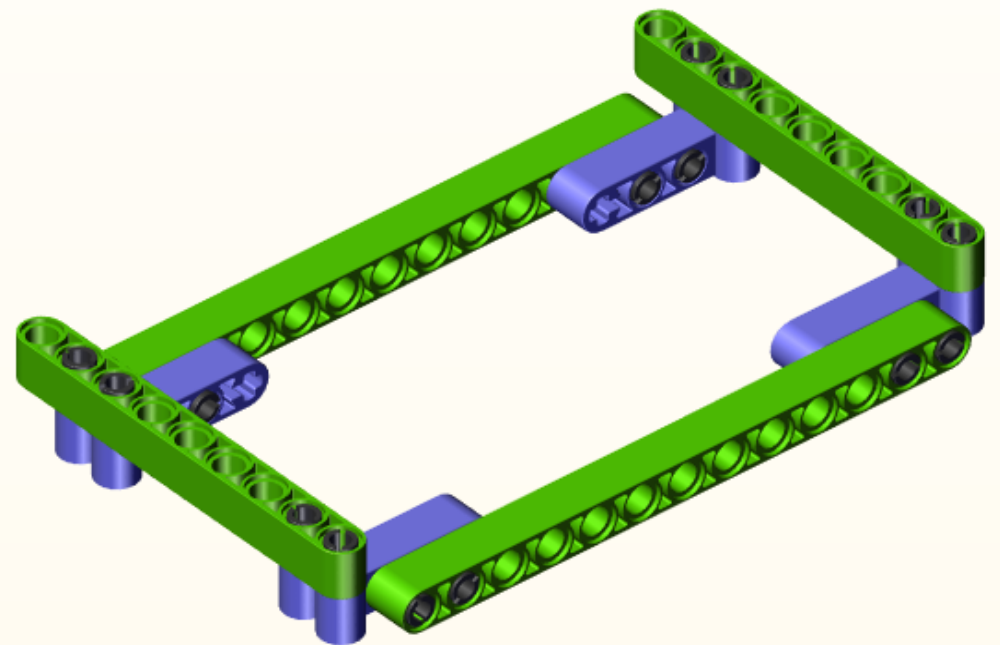
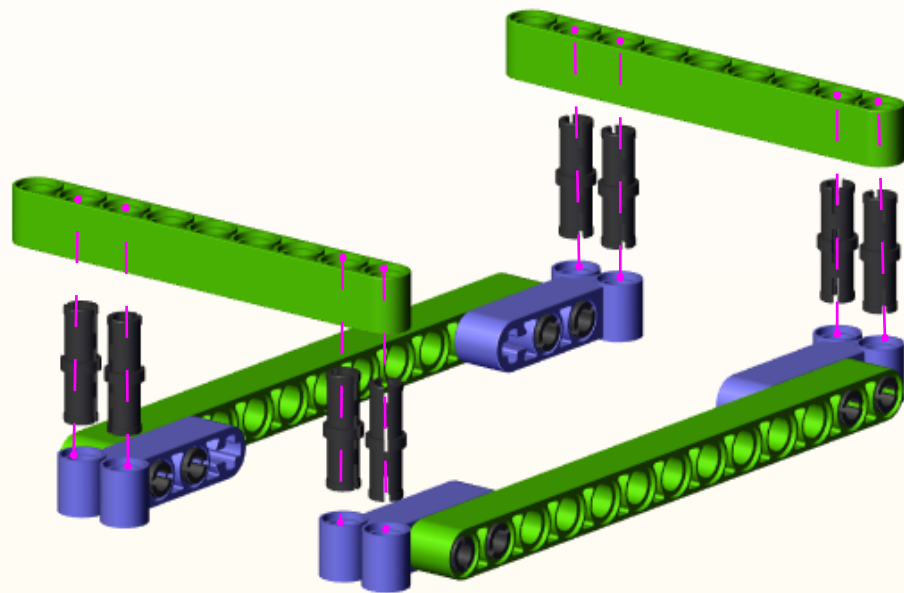




x2(9 holes)



x8



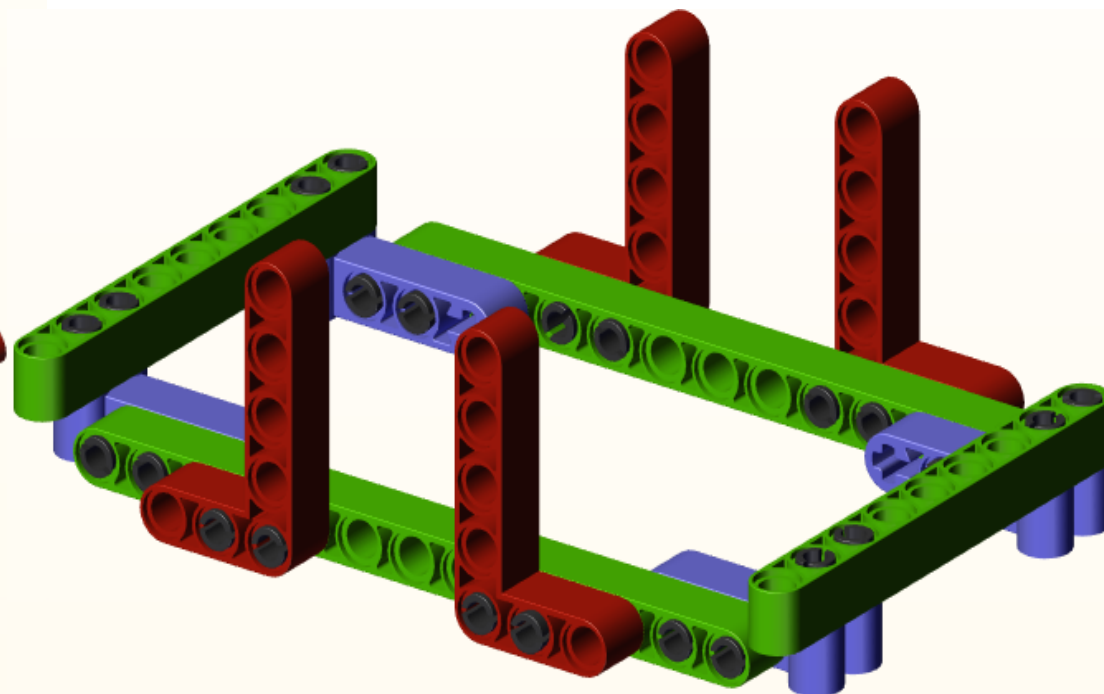
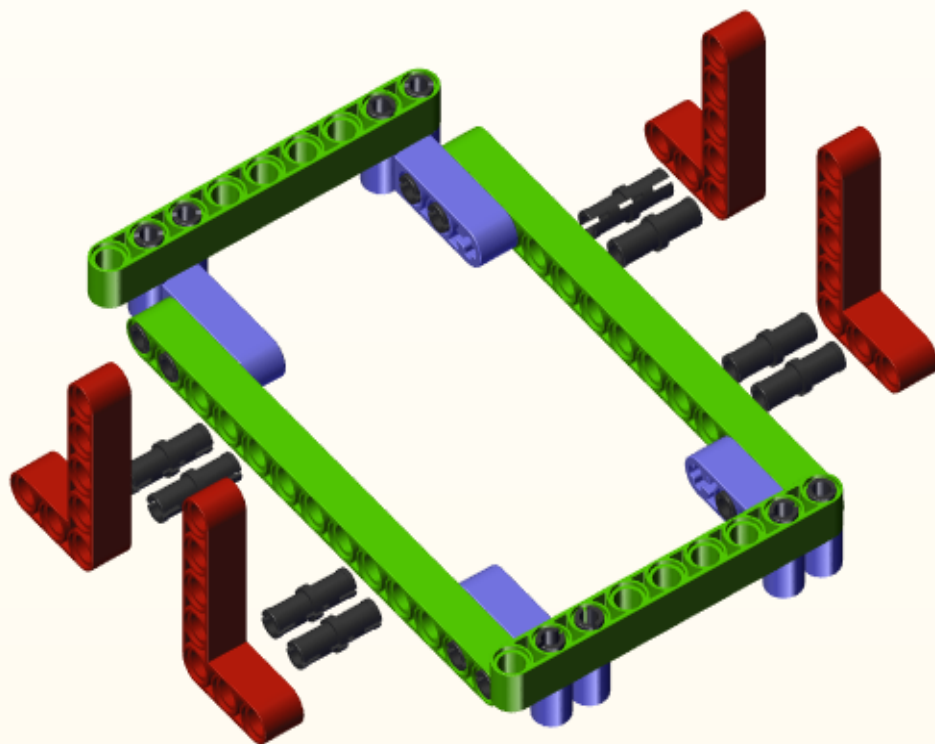




x8

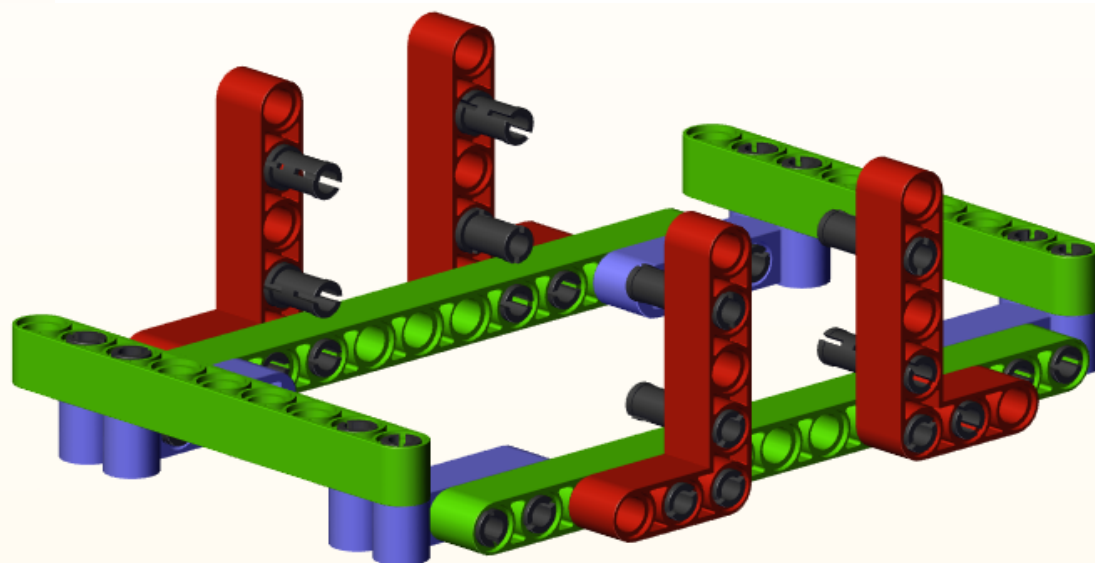
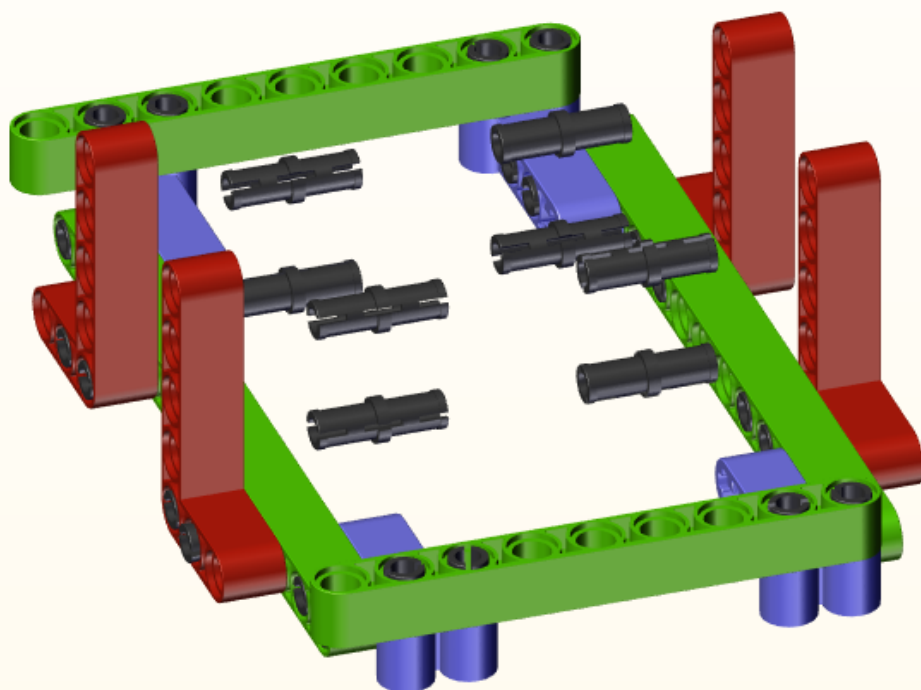


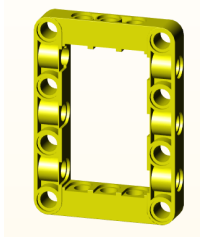
x4



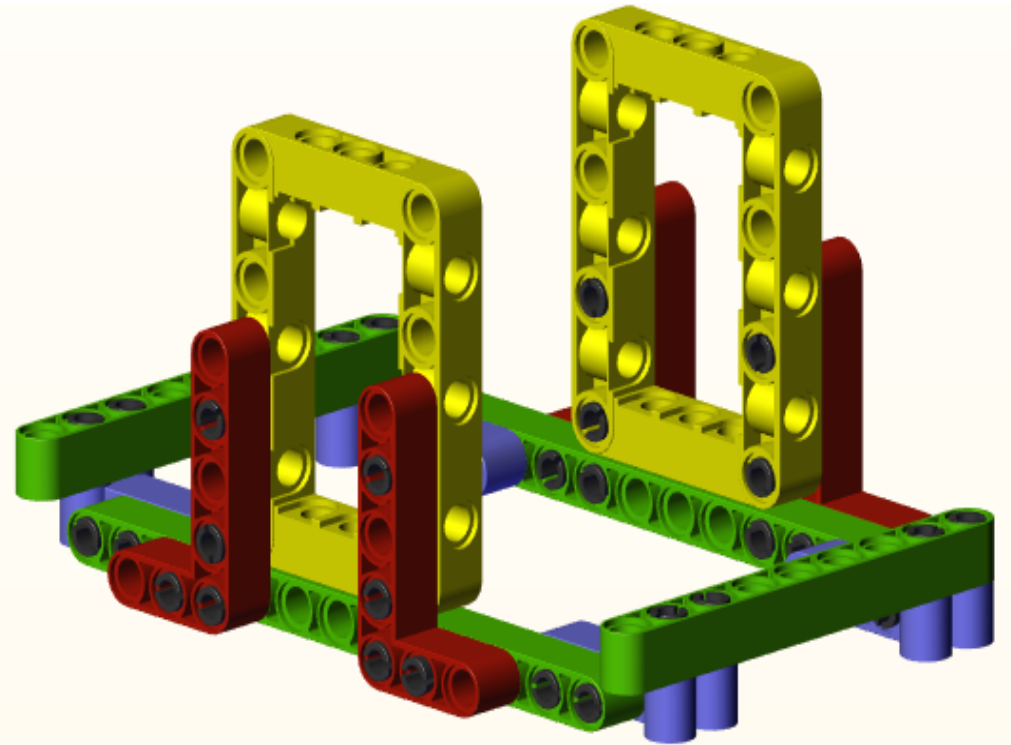
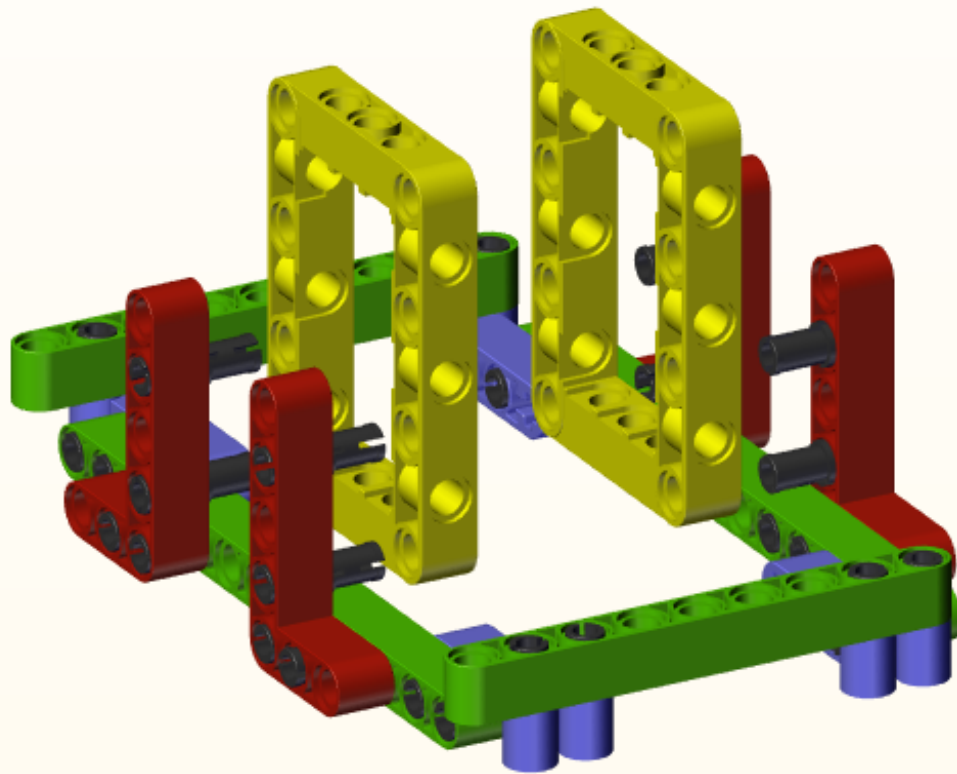


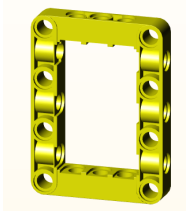
x8





x2

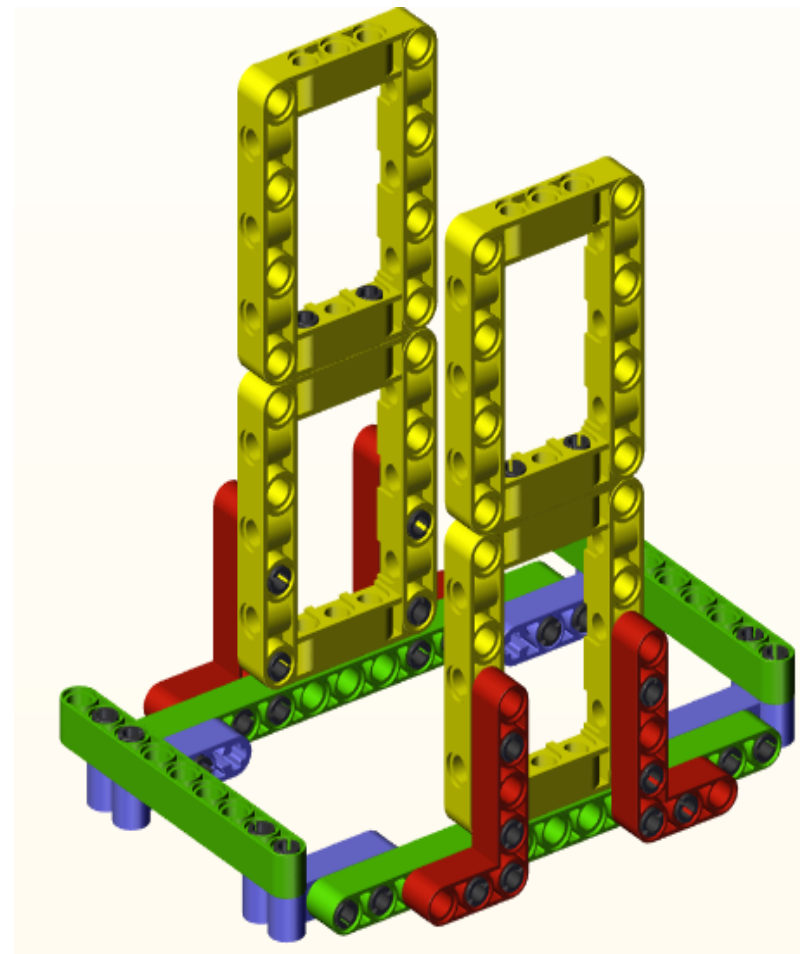
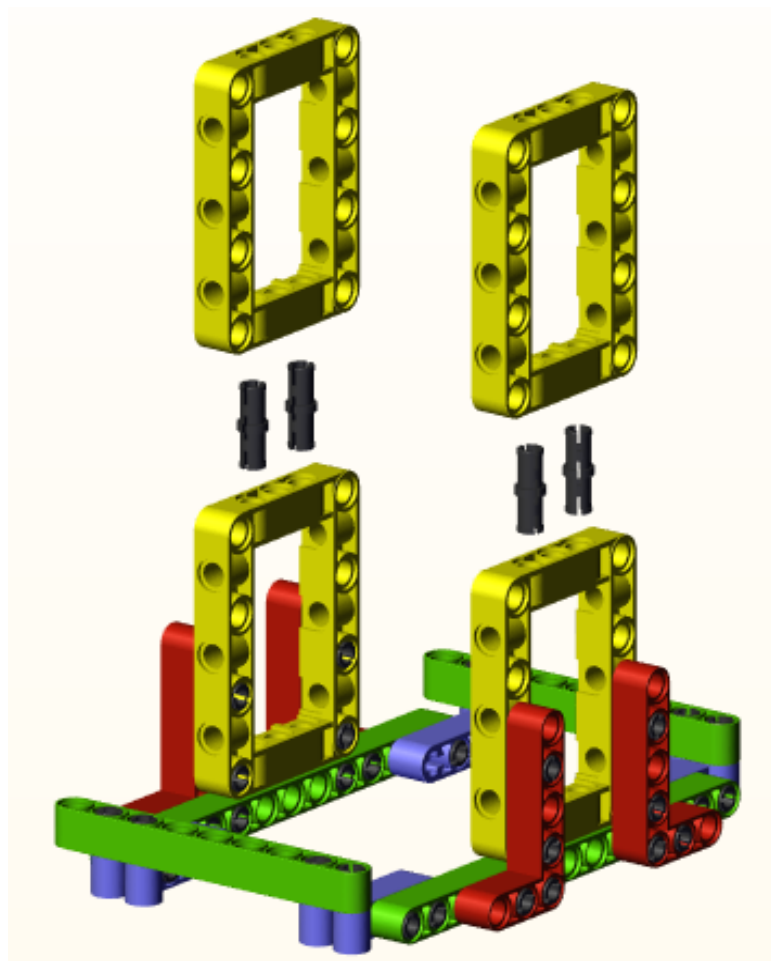


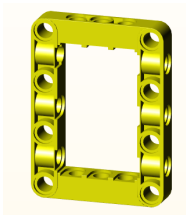


x2

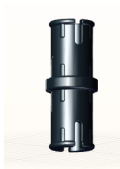


x4

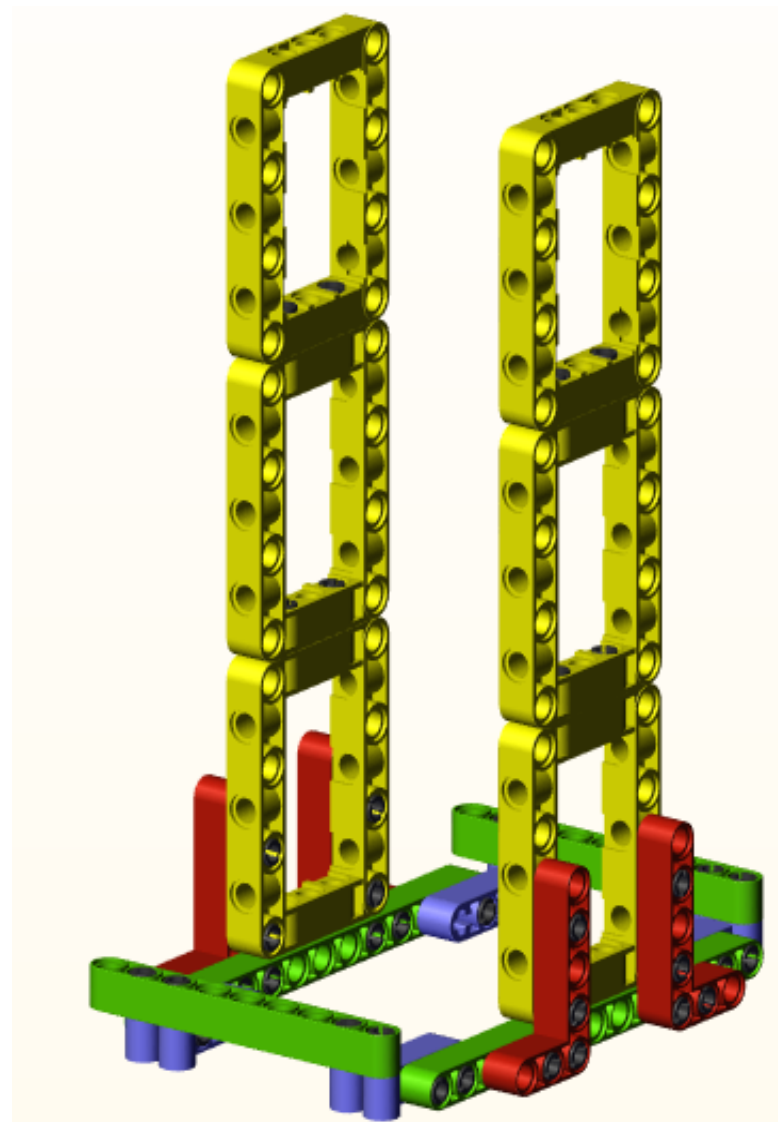
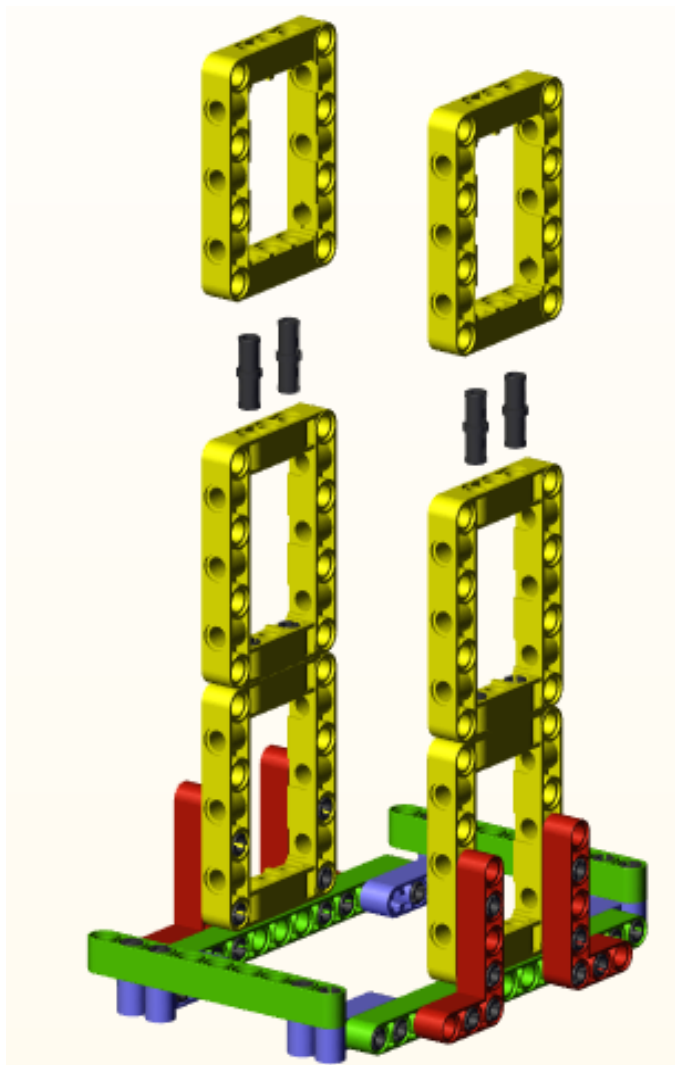




x2

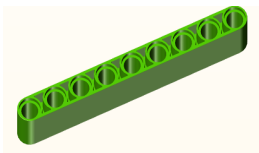


x4

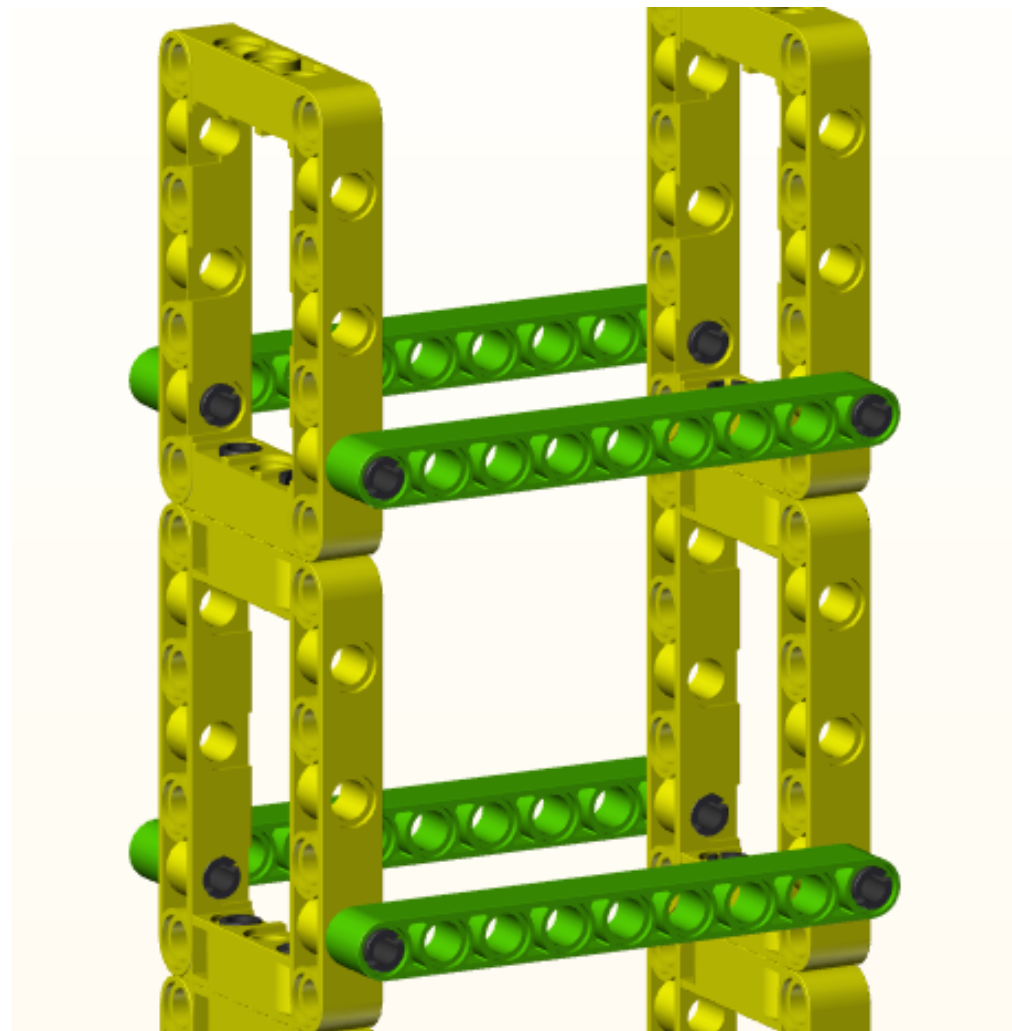
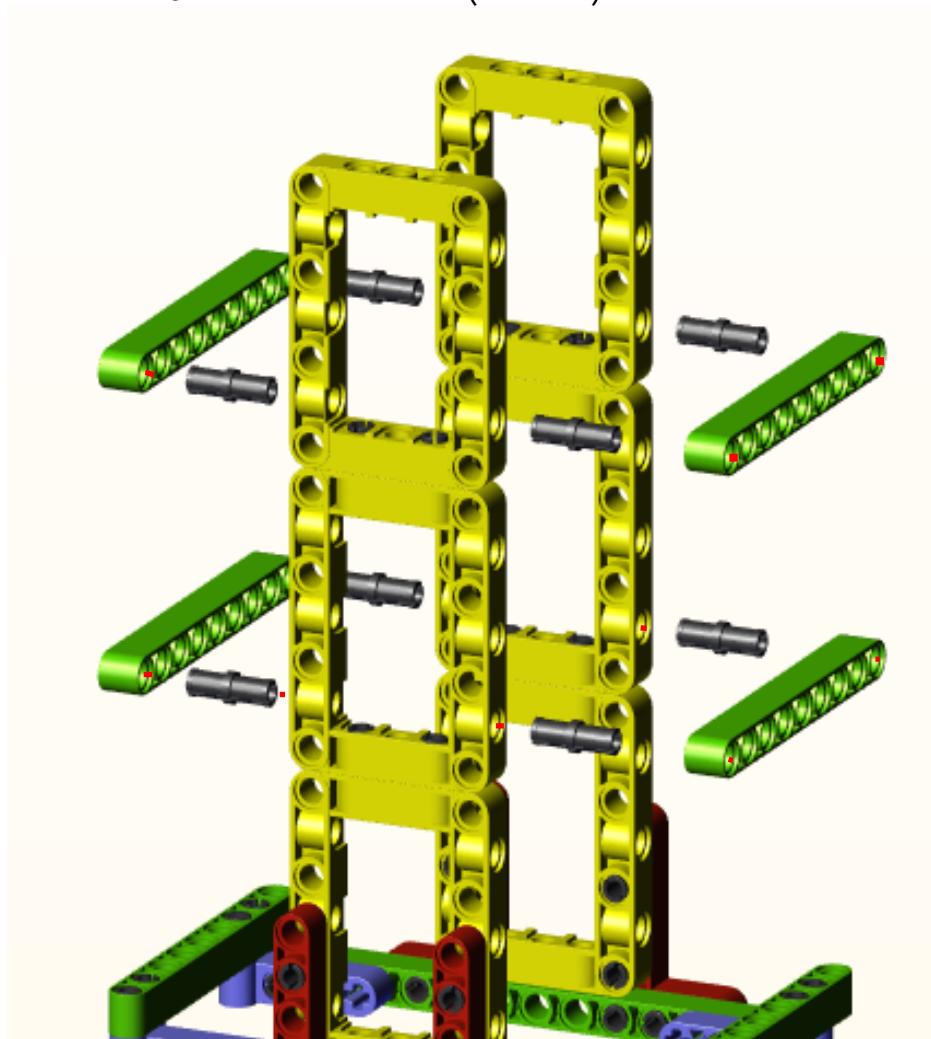




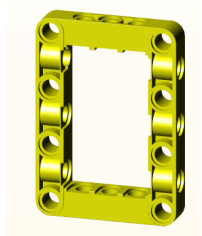
x8



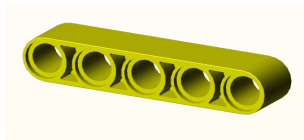
x4(9 holes)



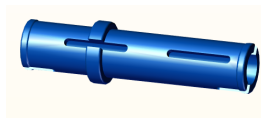




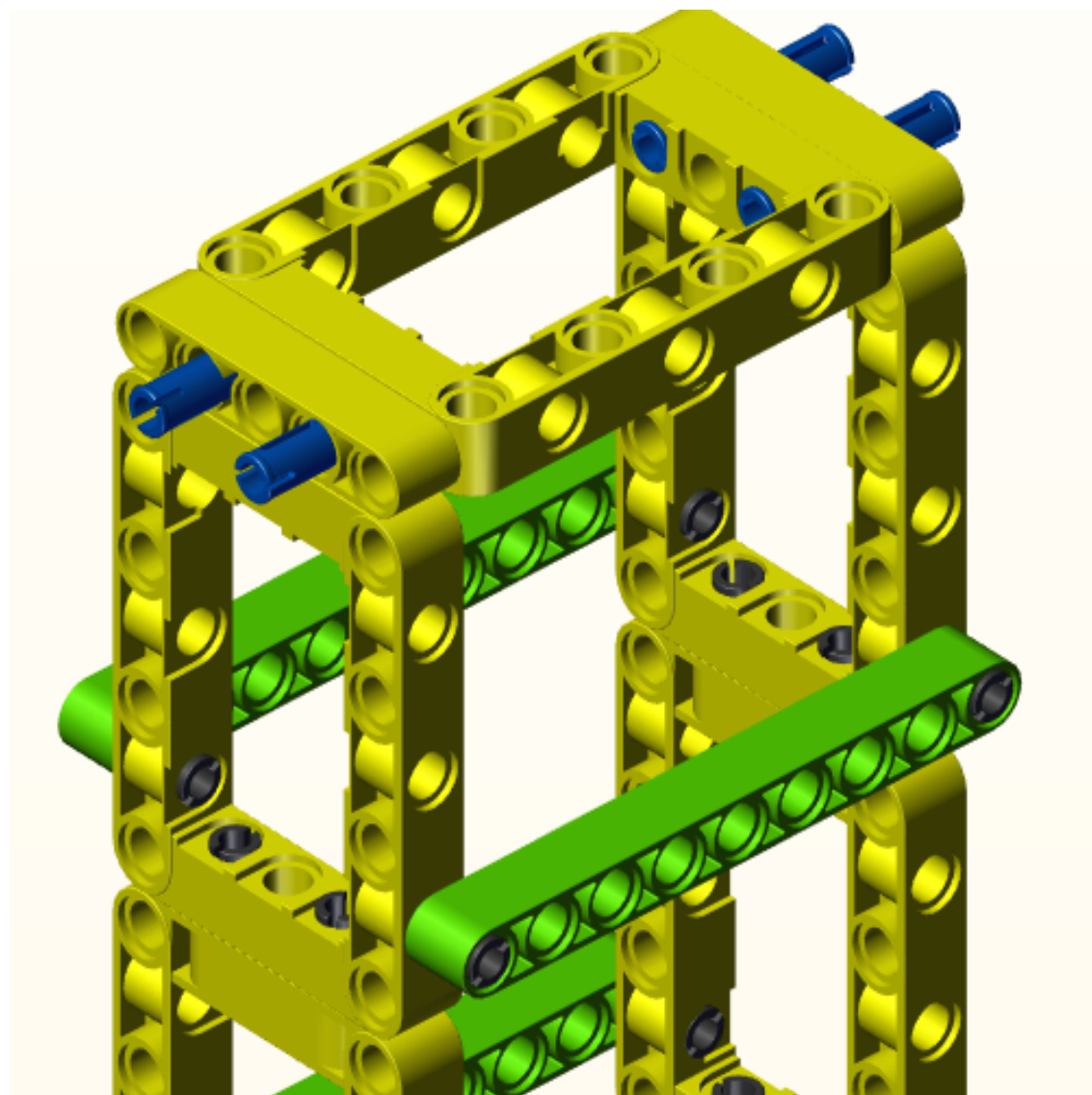
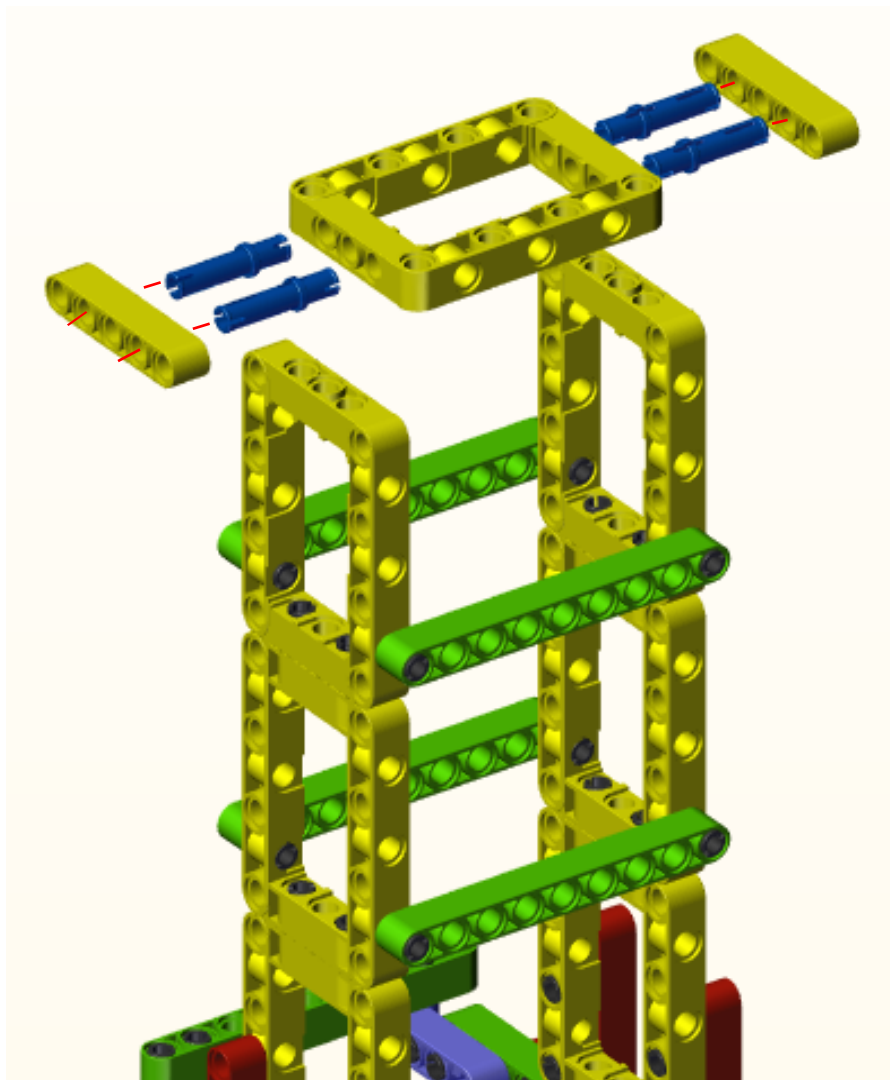
x1



x2(5 holes)

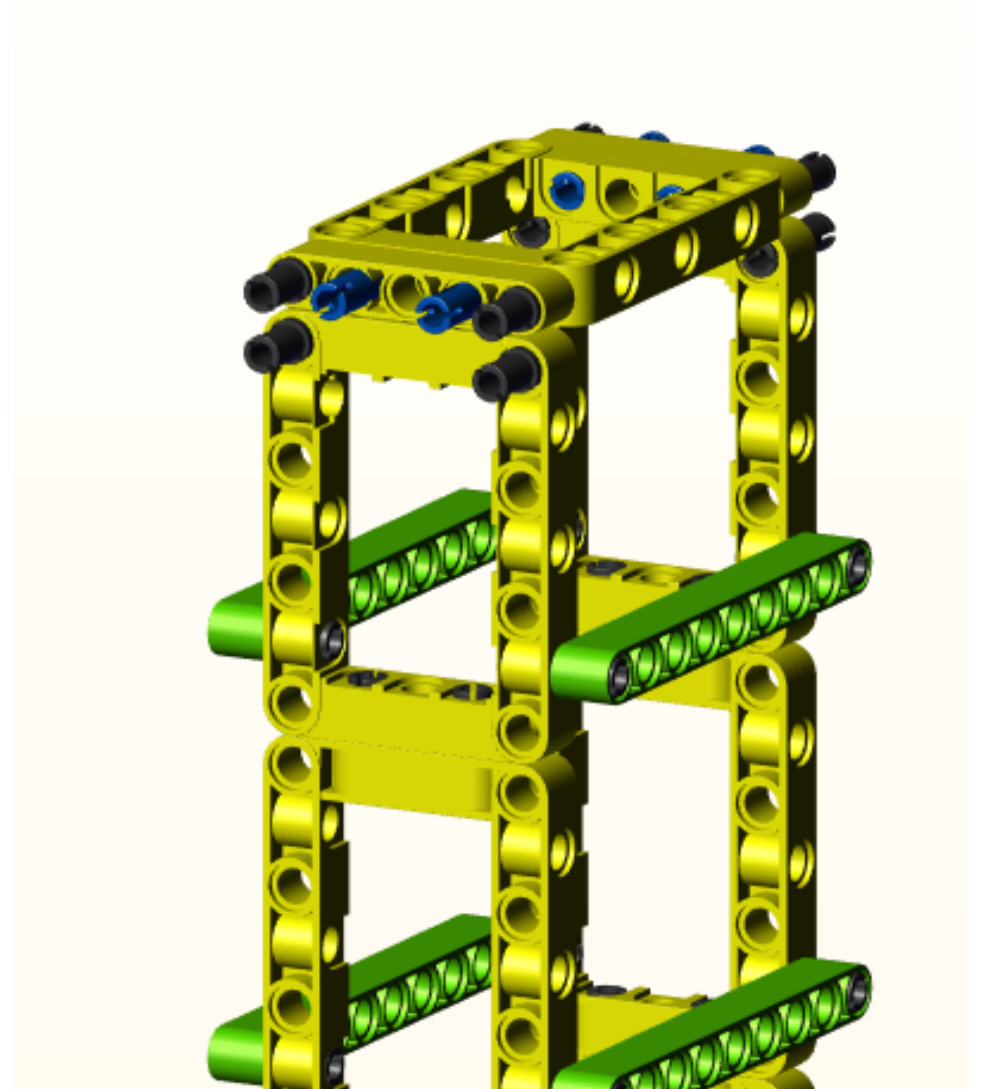
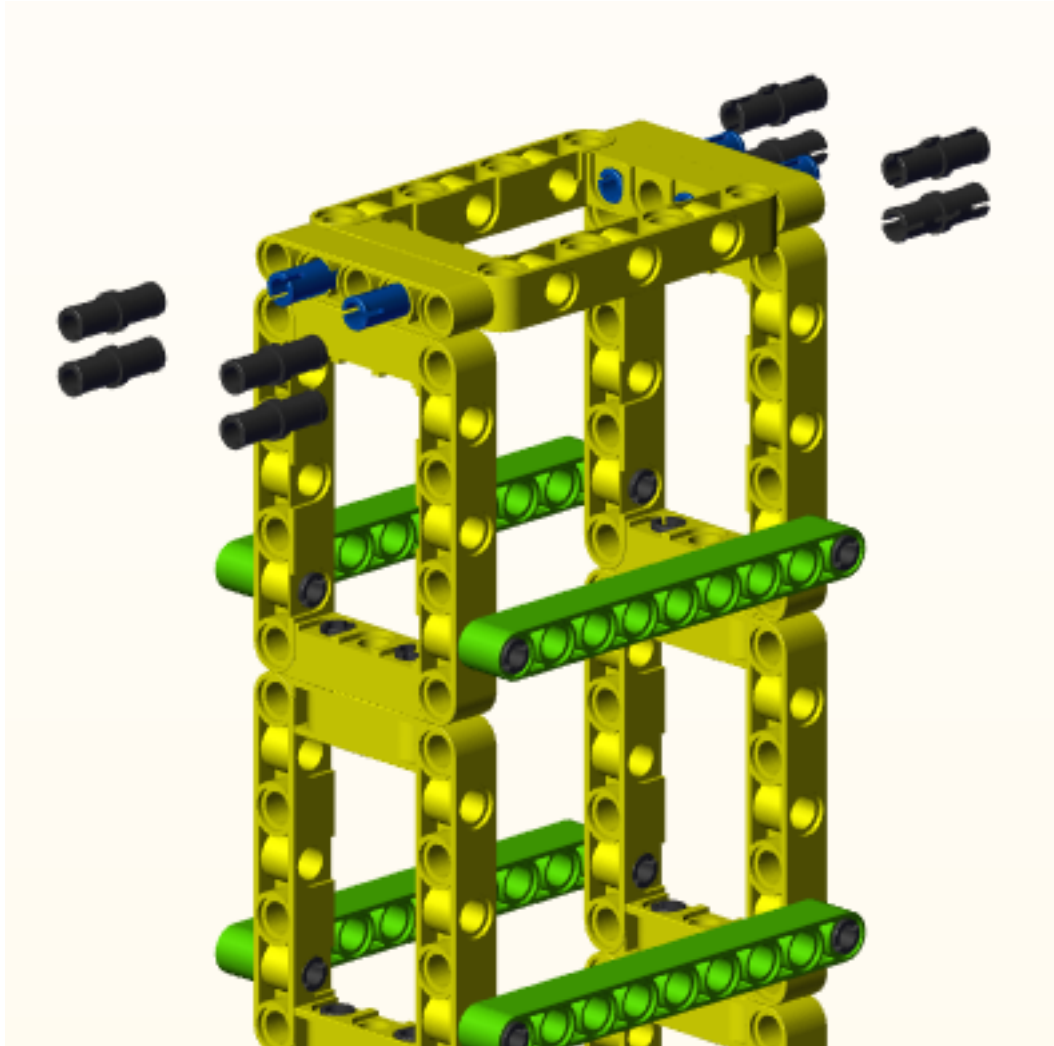


x4





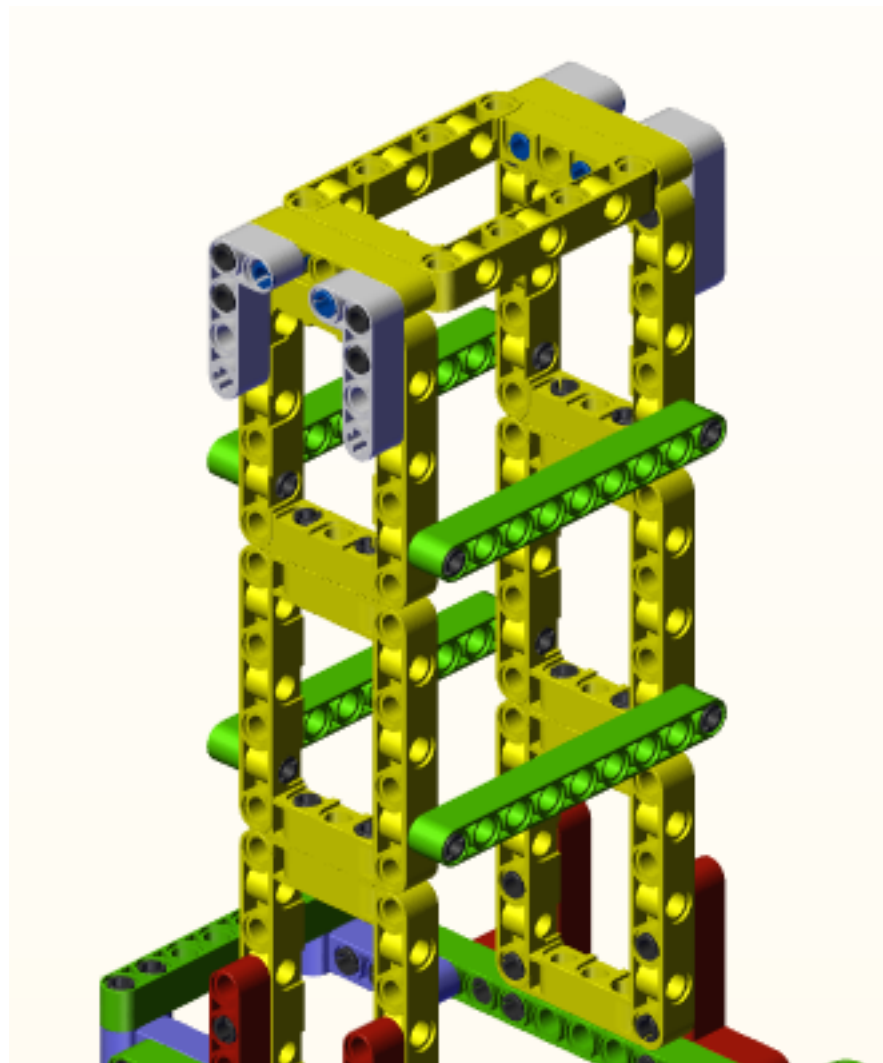
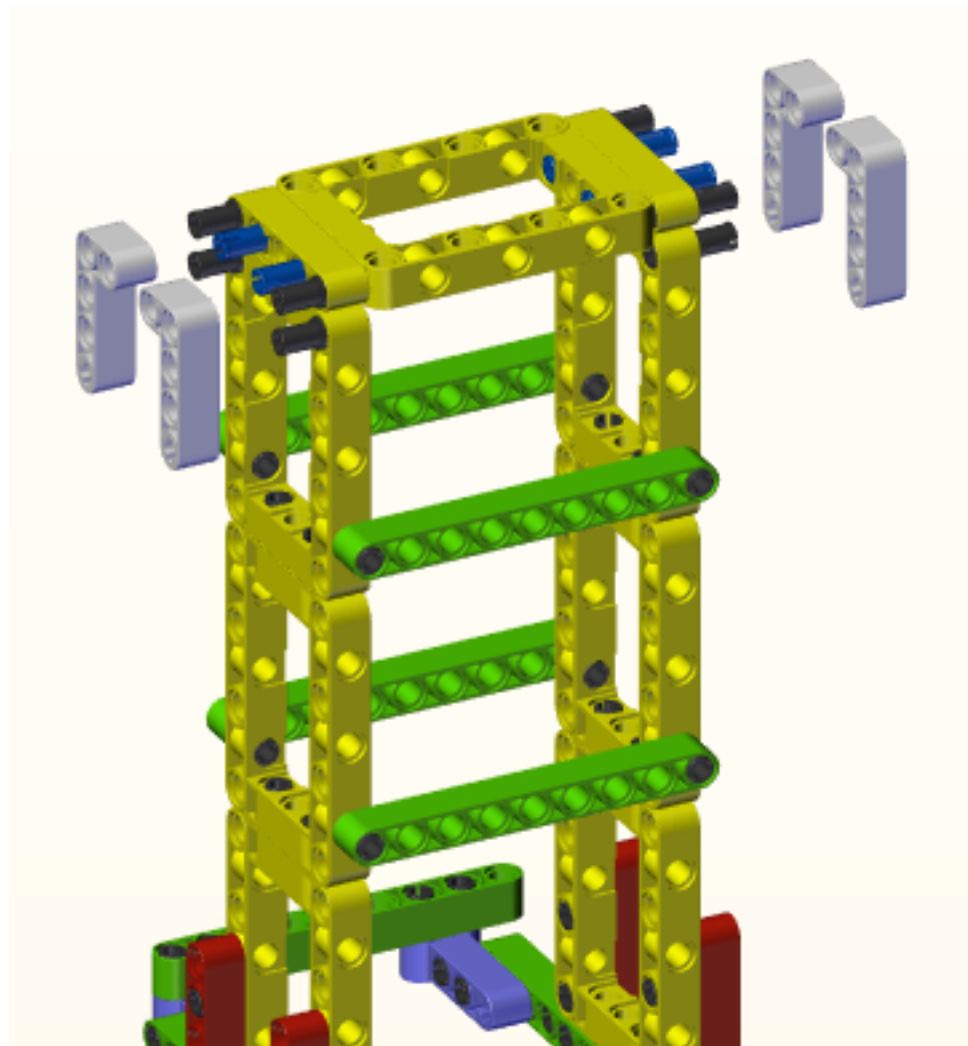
x8





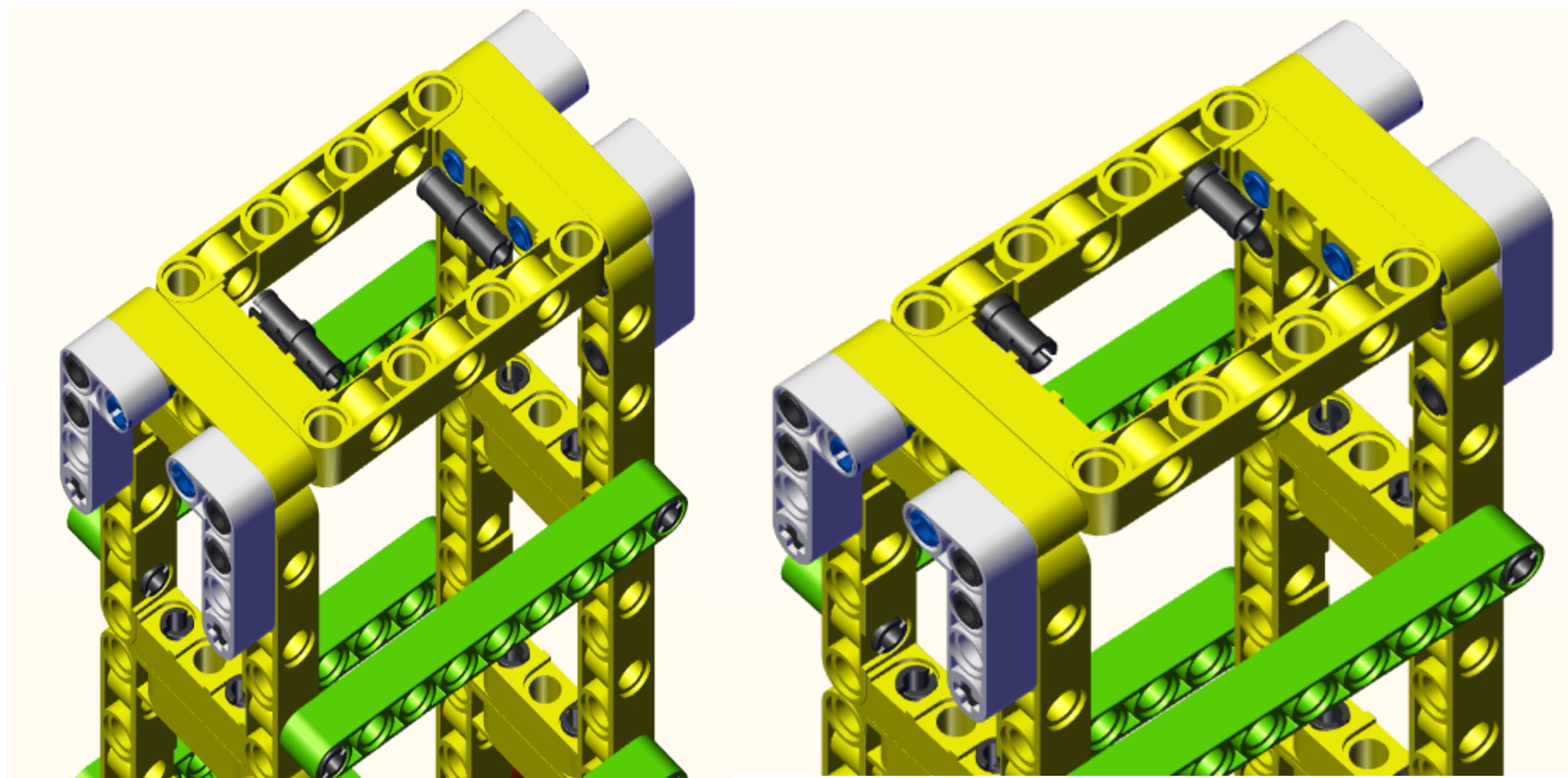


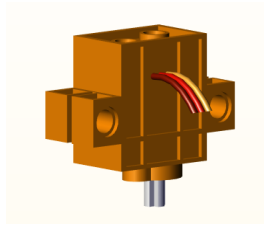
x4



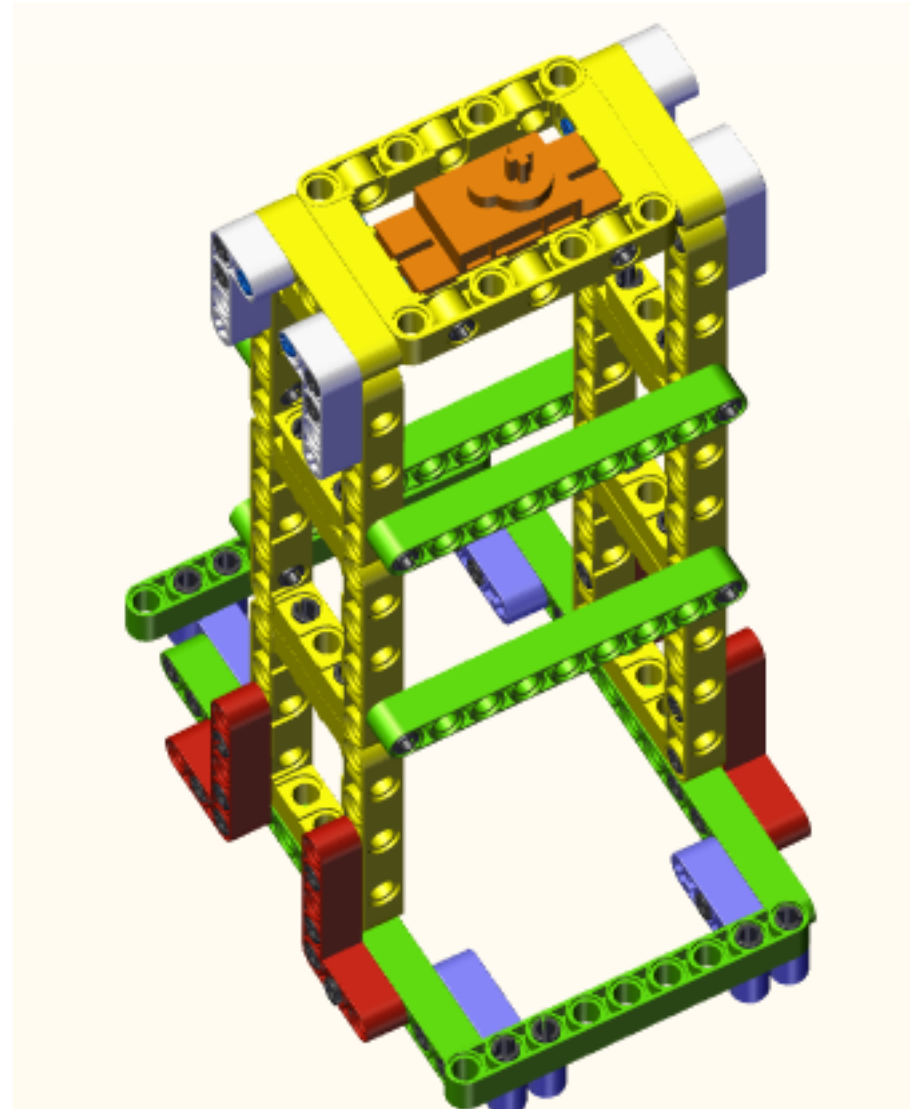
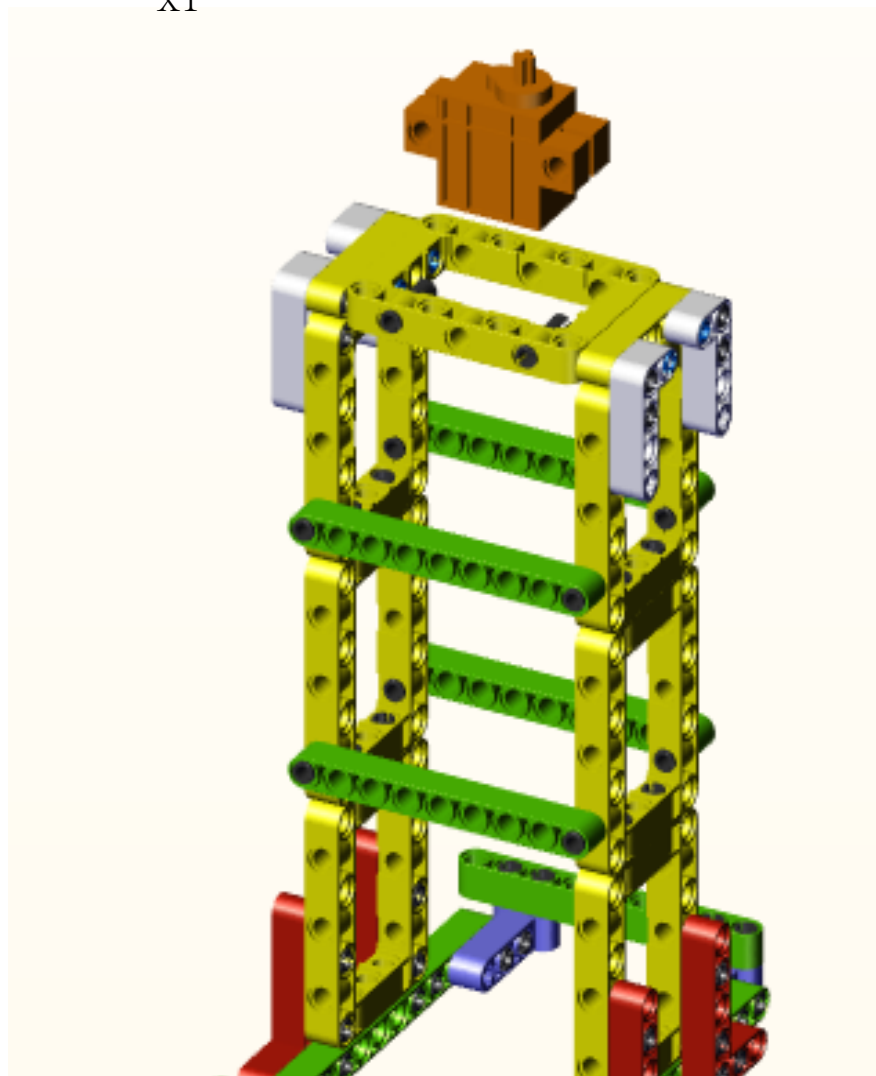


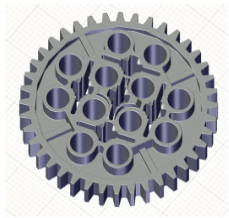
x2



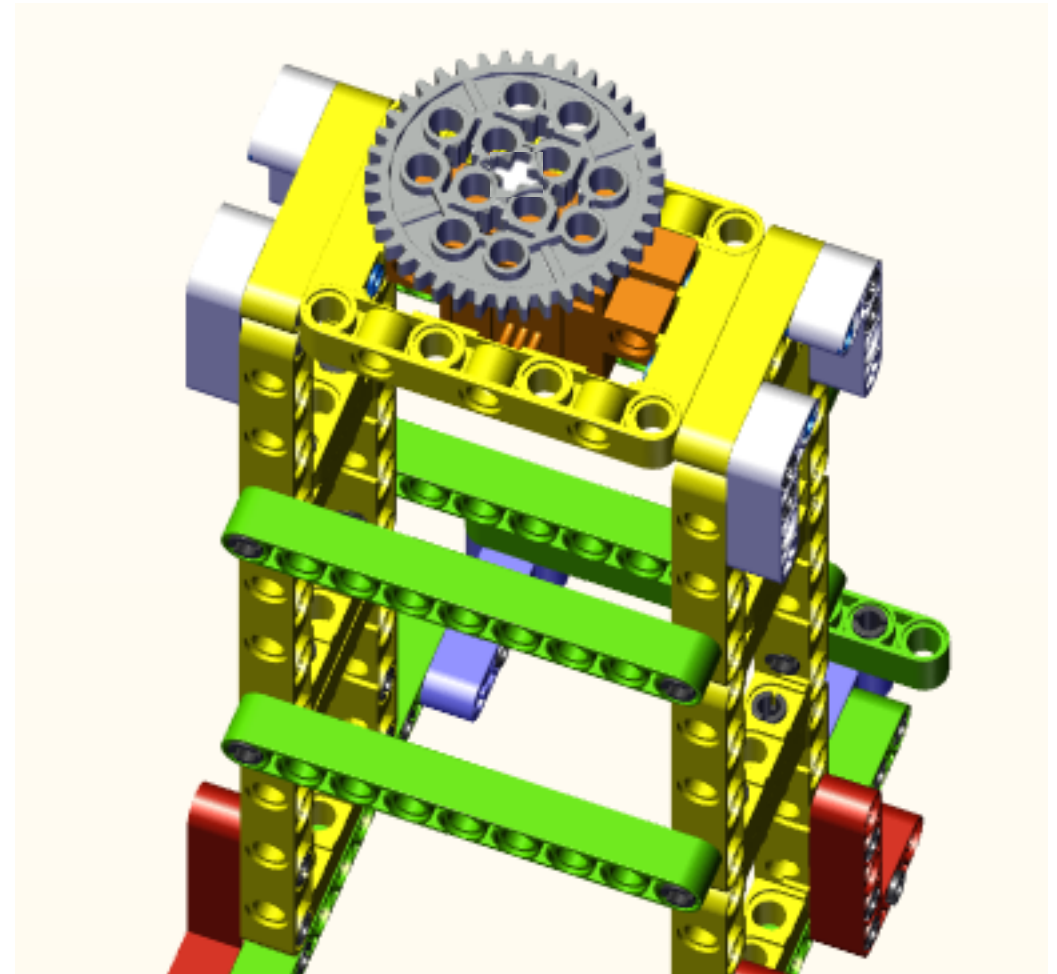
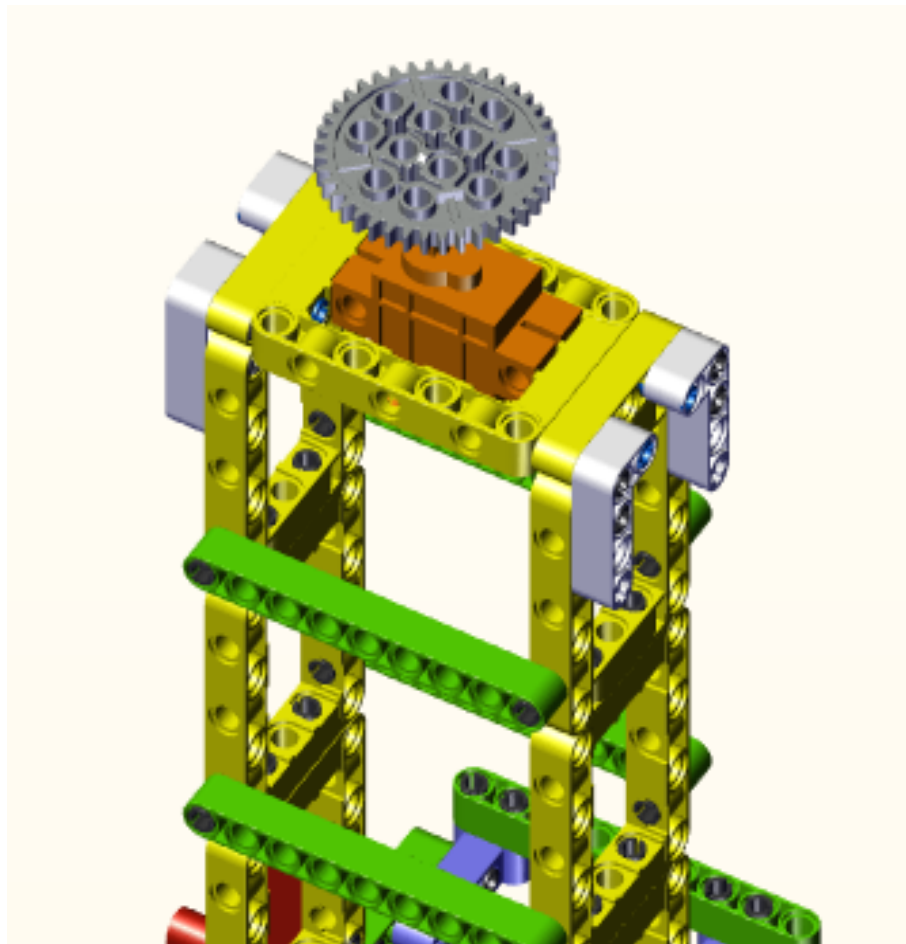


x1

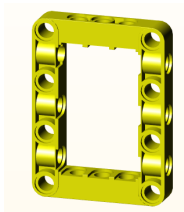




x1



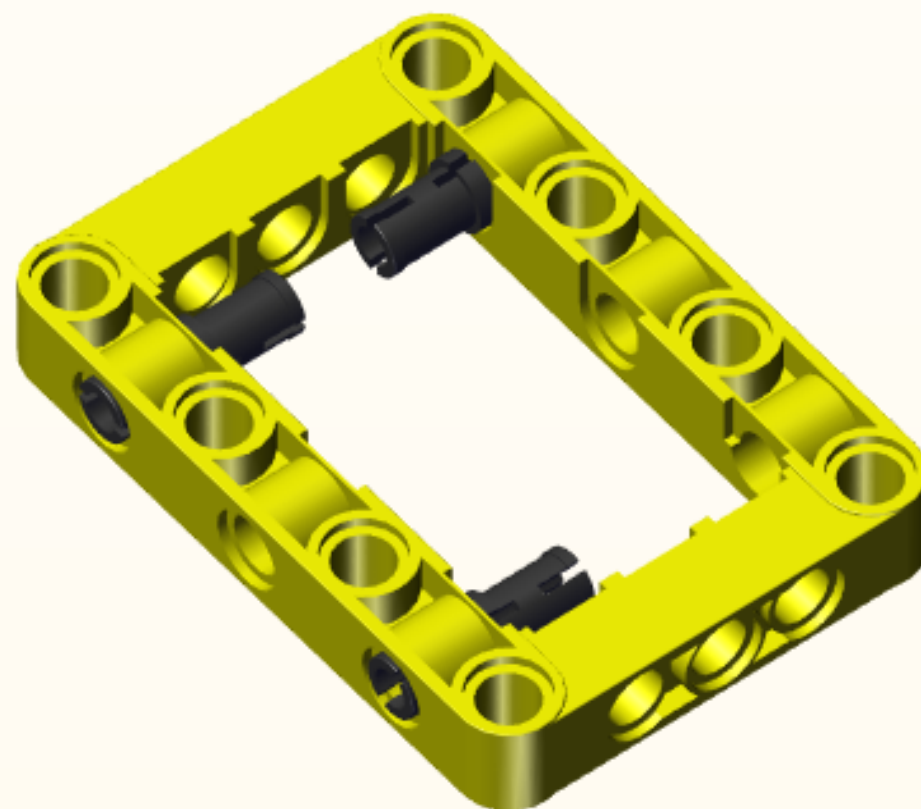
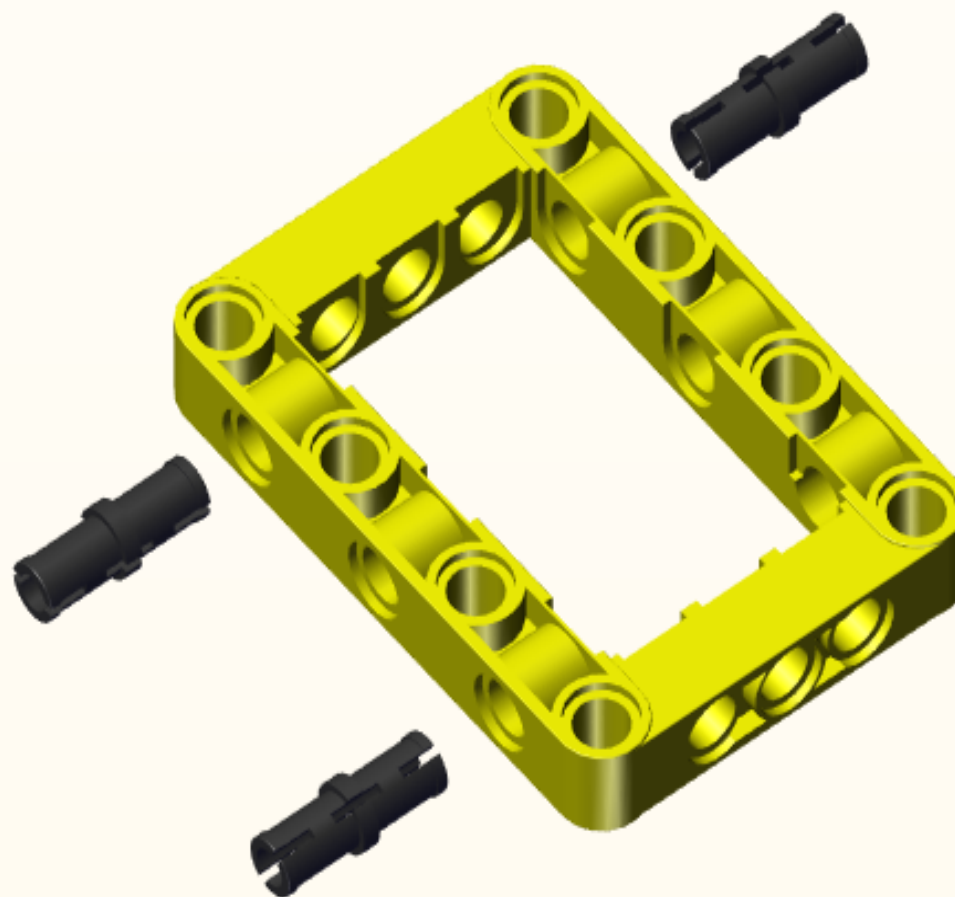


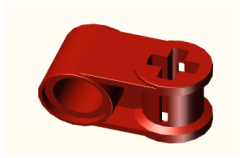


x1

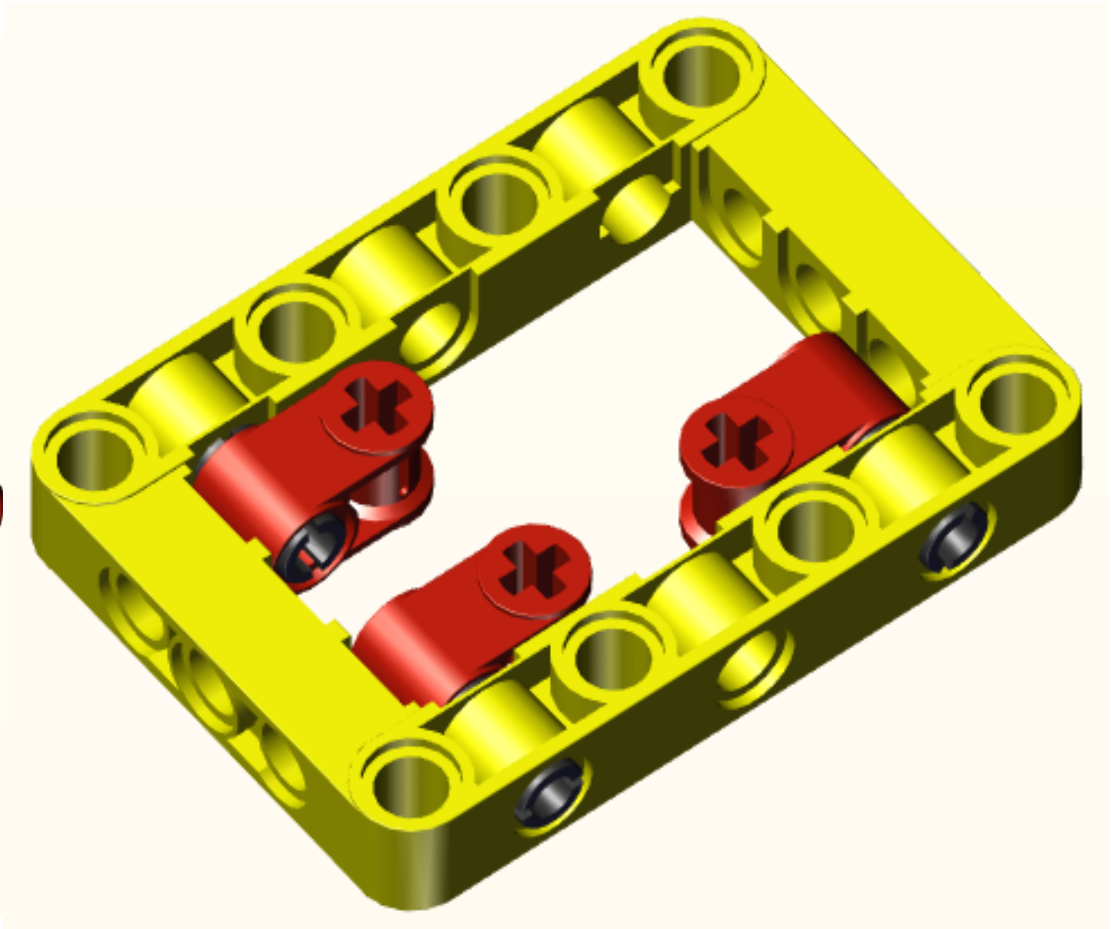
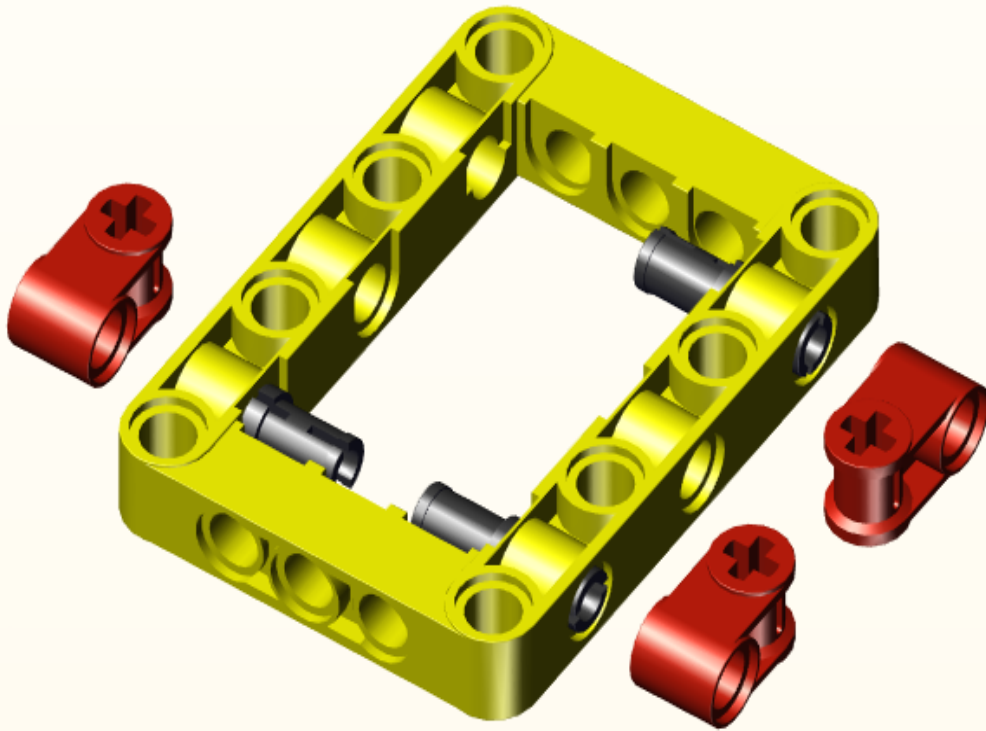


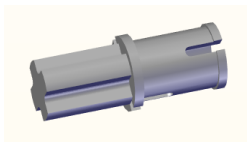
x3



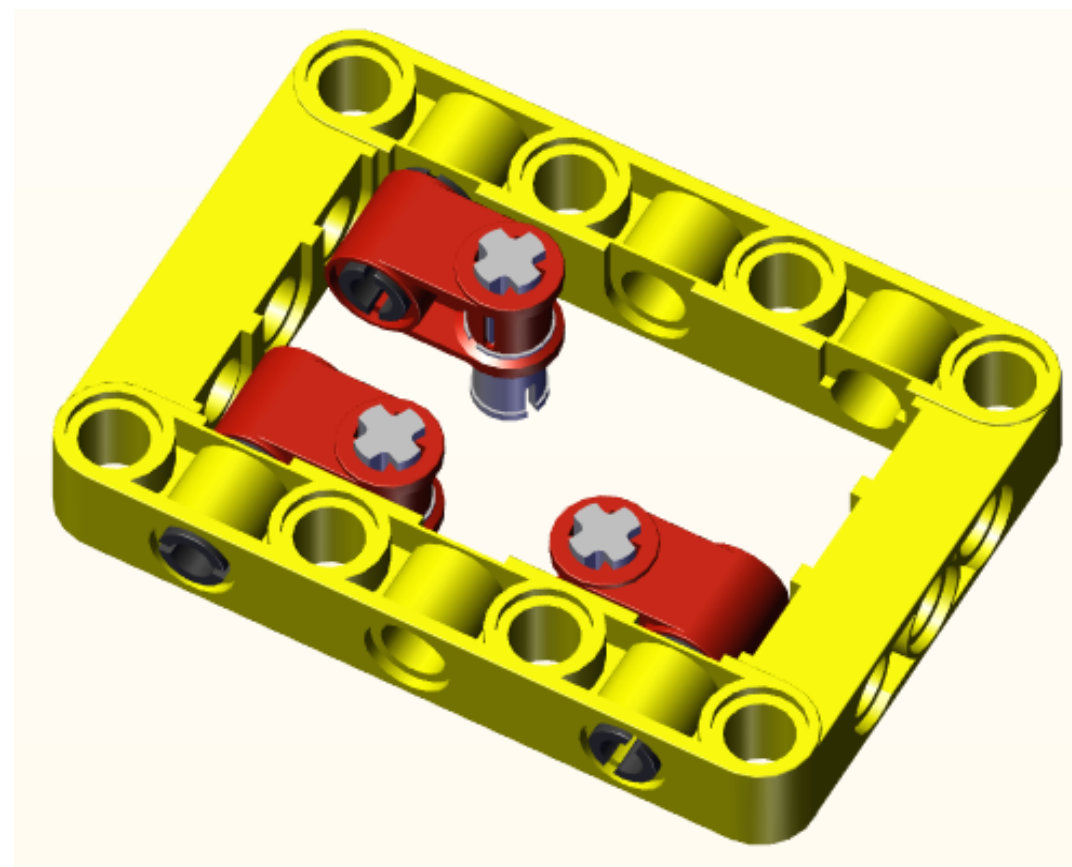
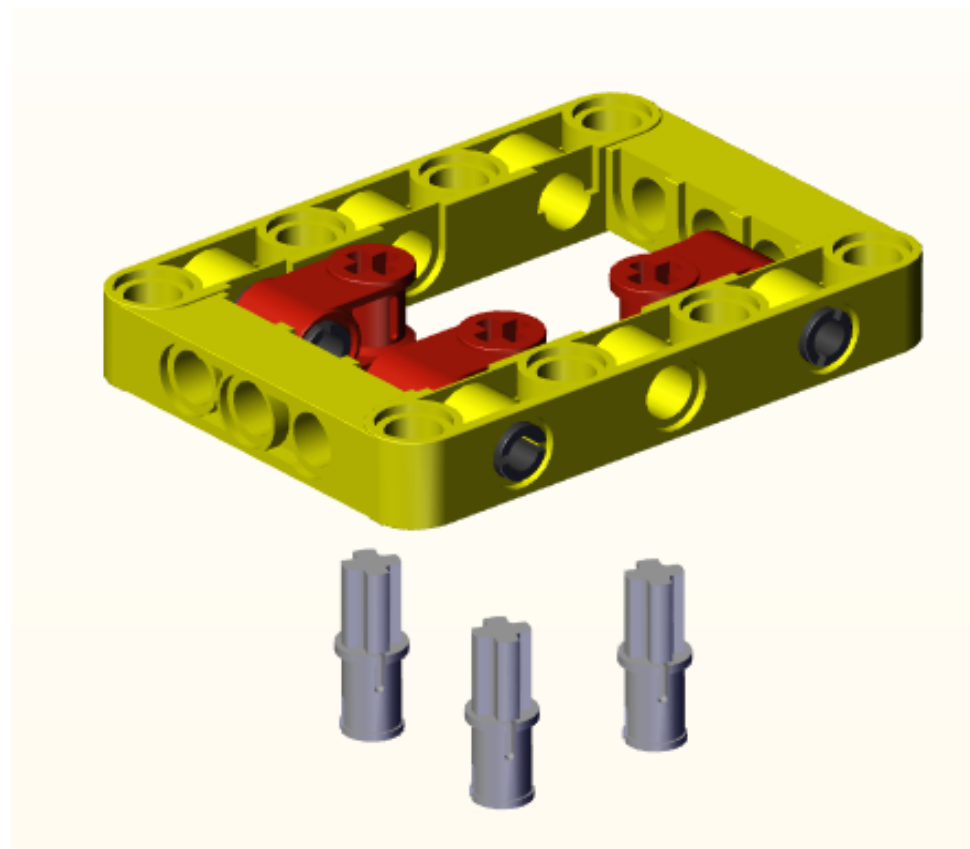


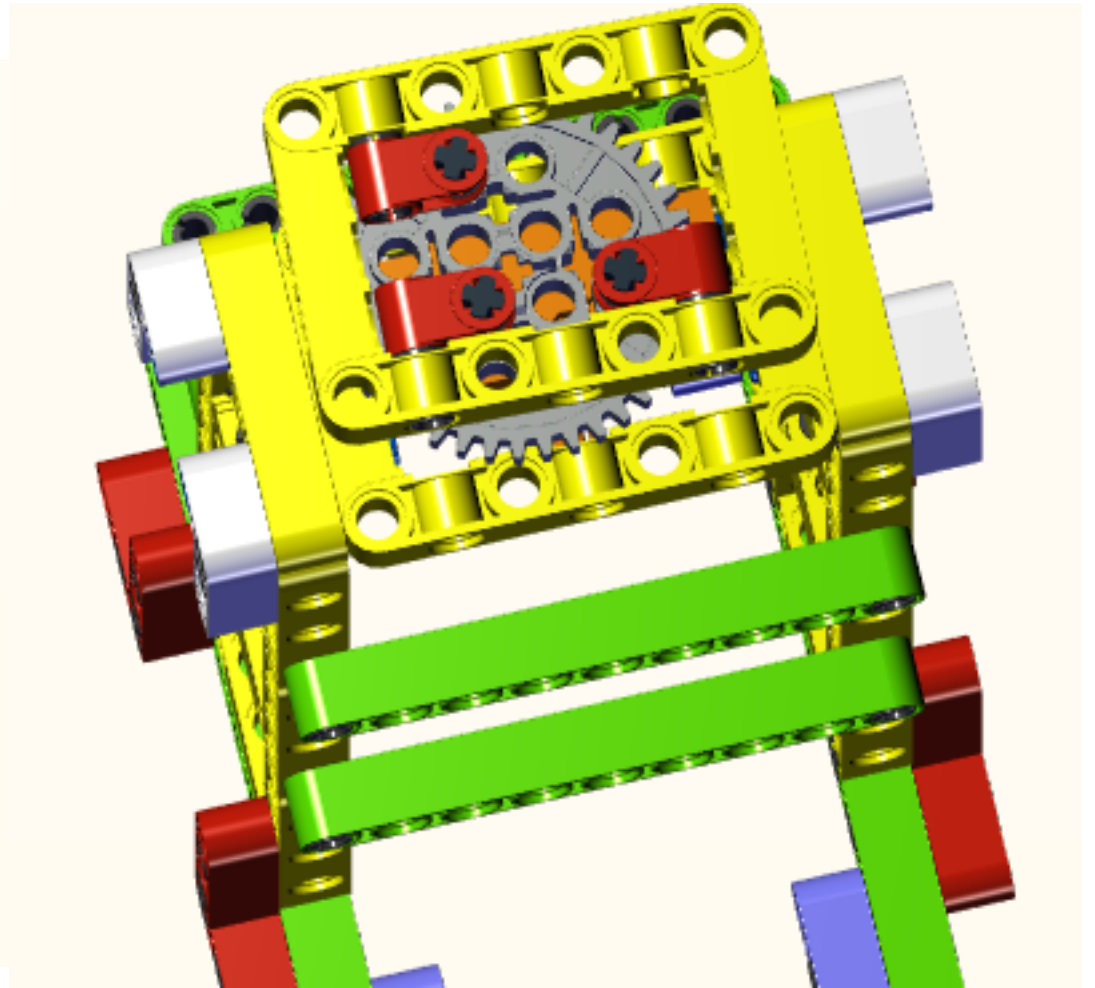
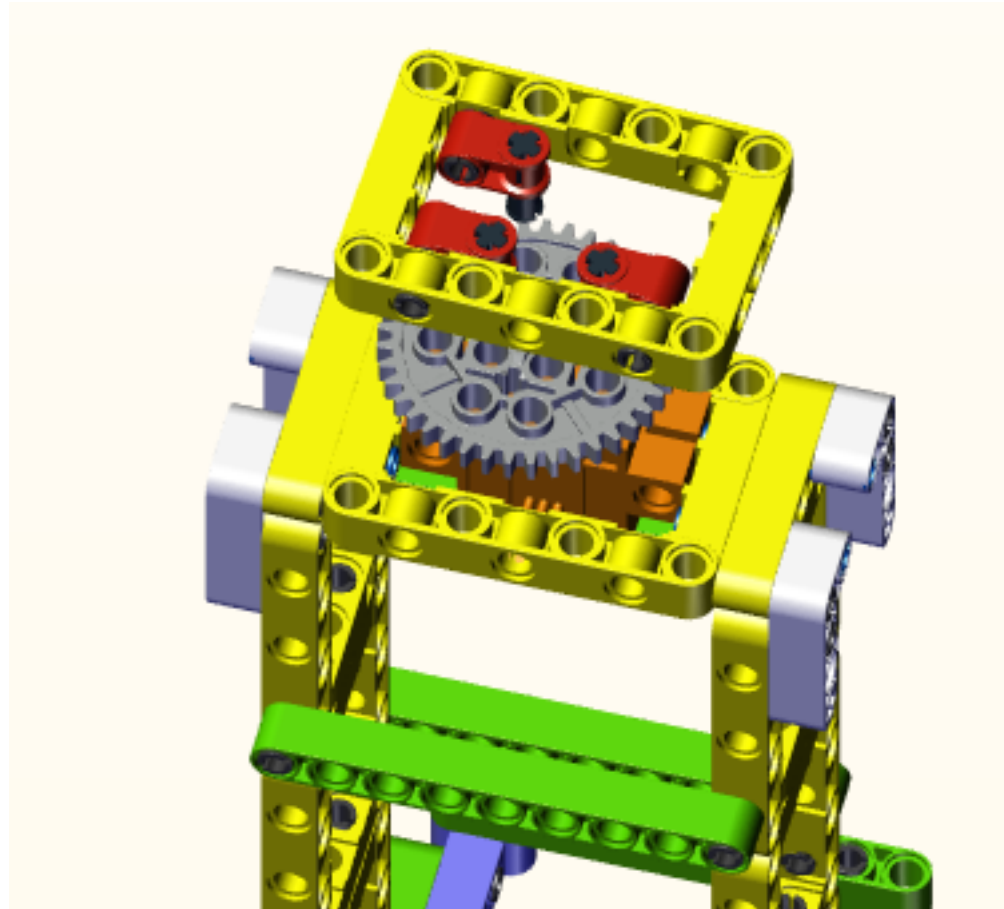
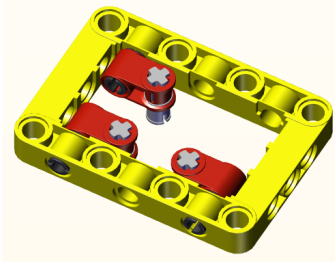
x3



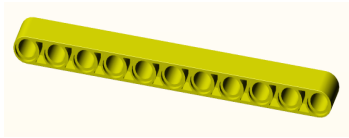


x3

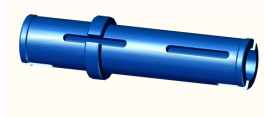




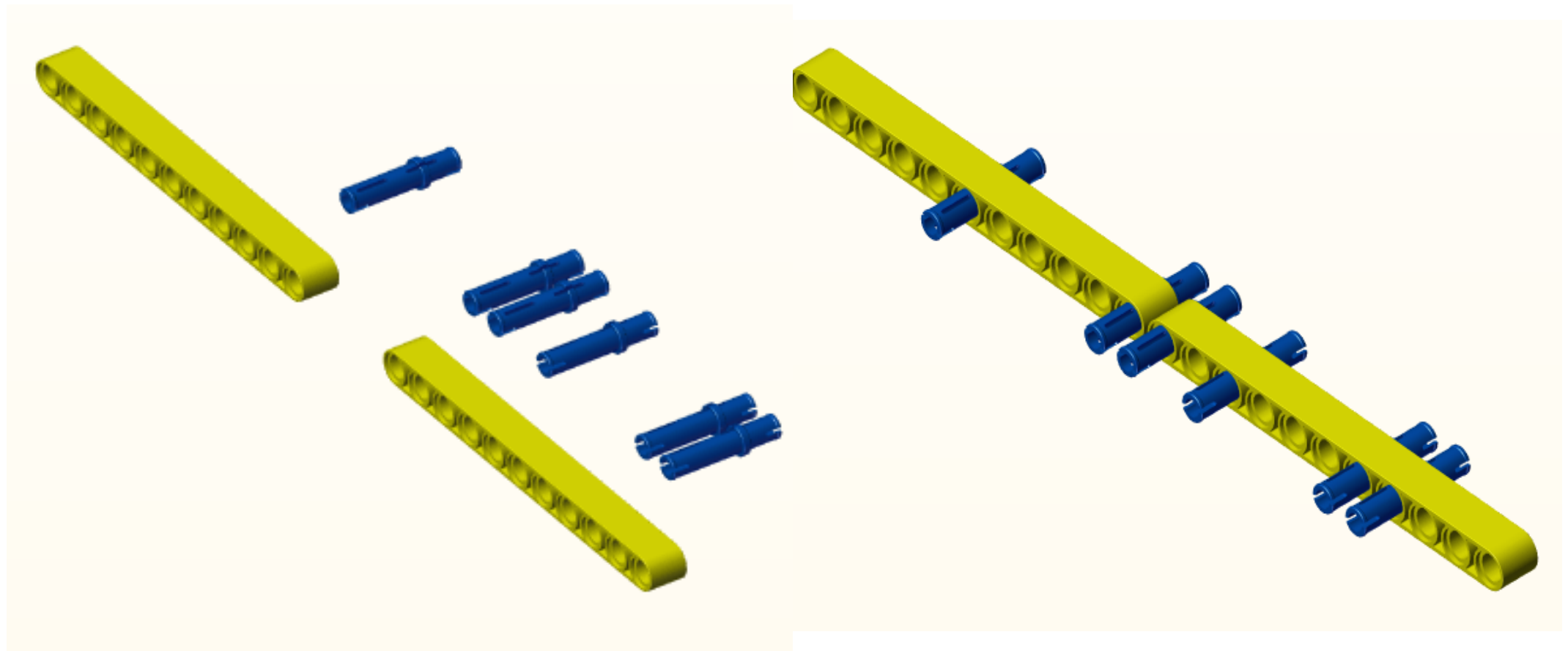


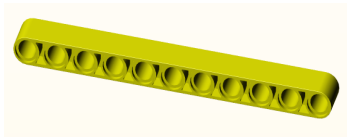


x2(11 holes)

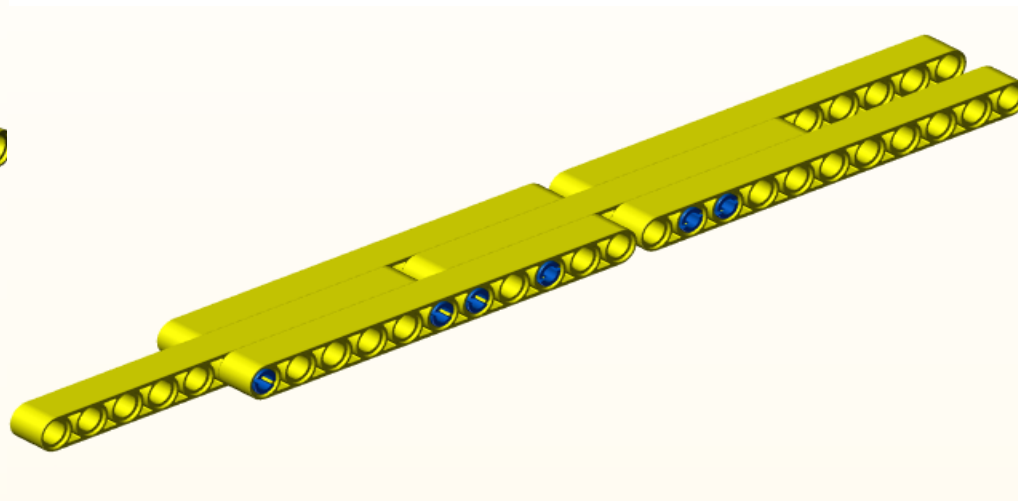
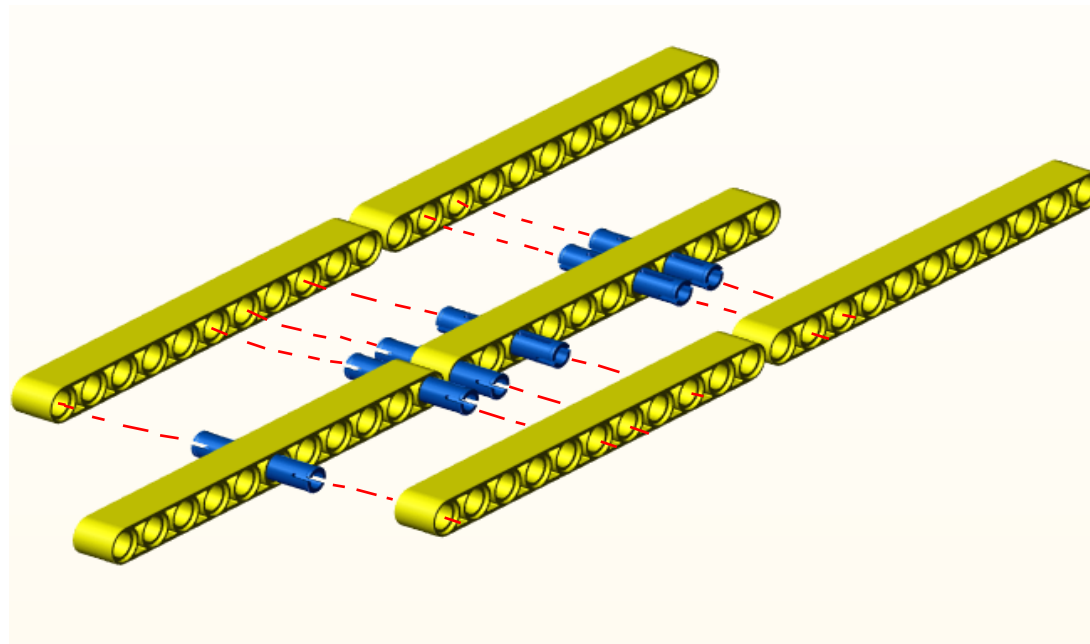


x6



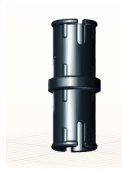


x4(11 holes)

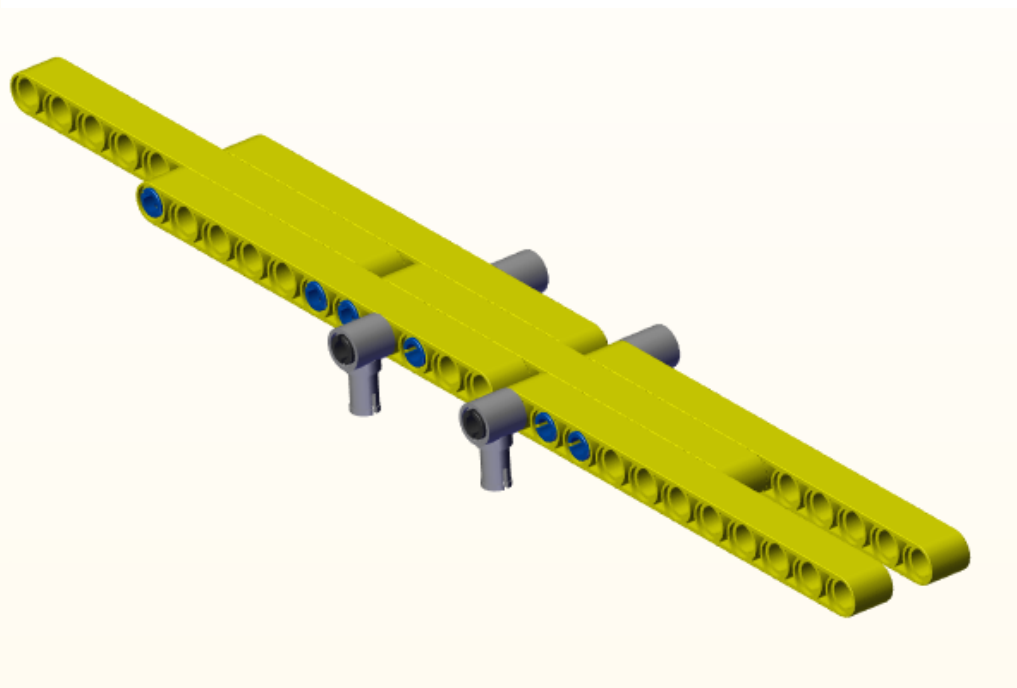
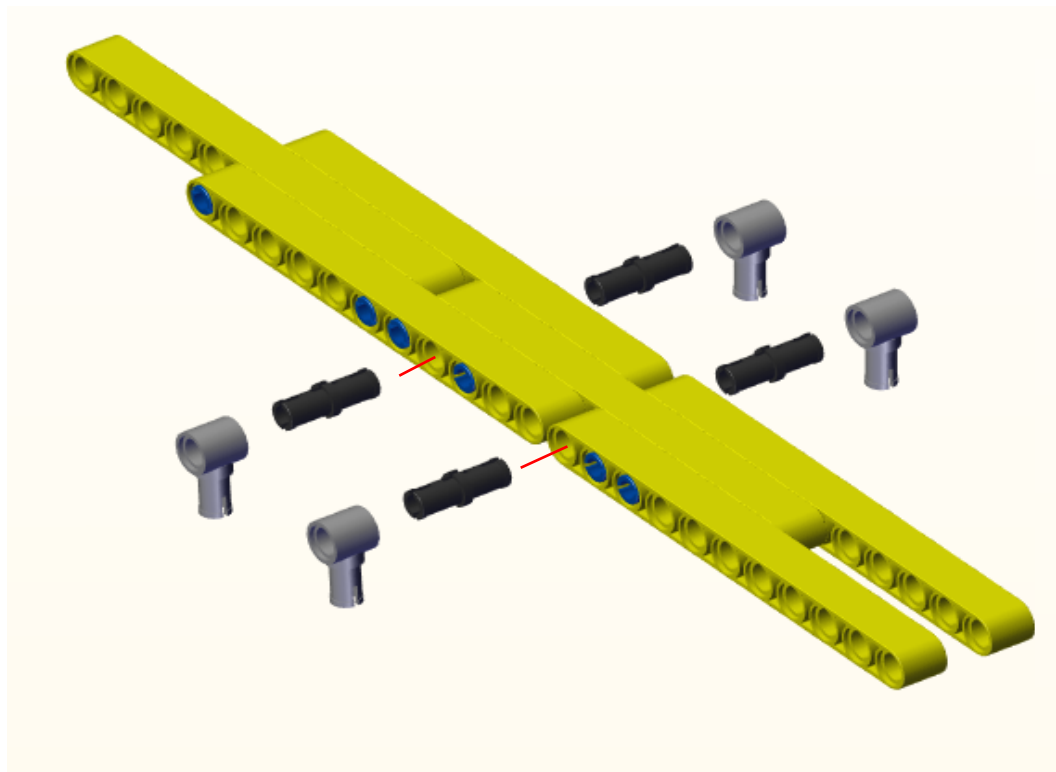


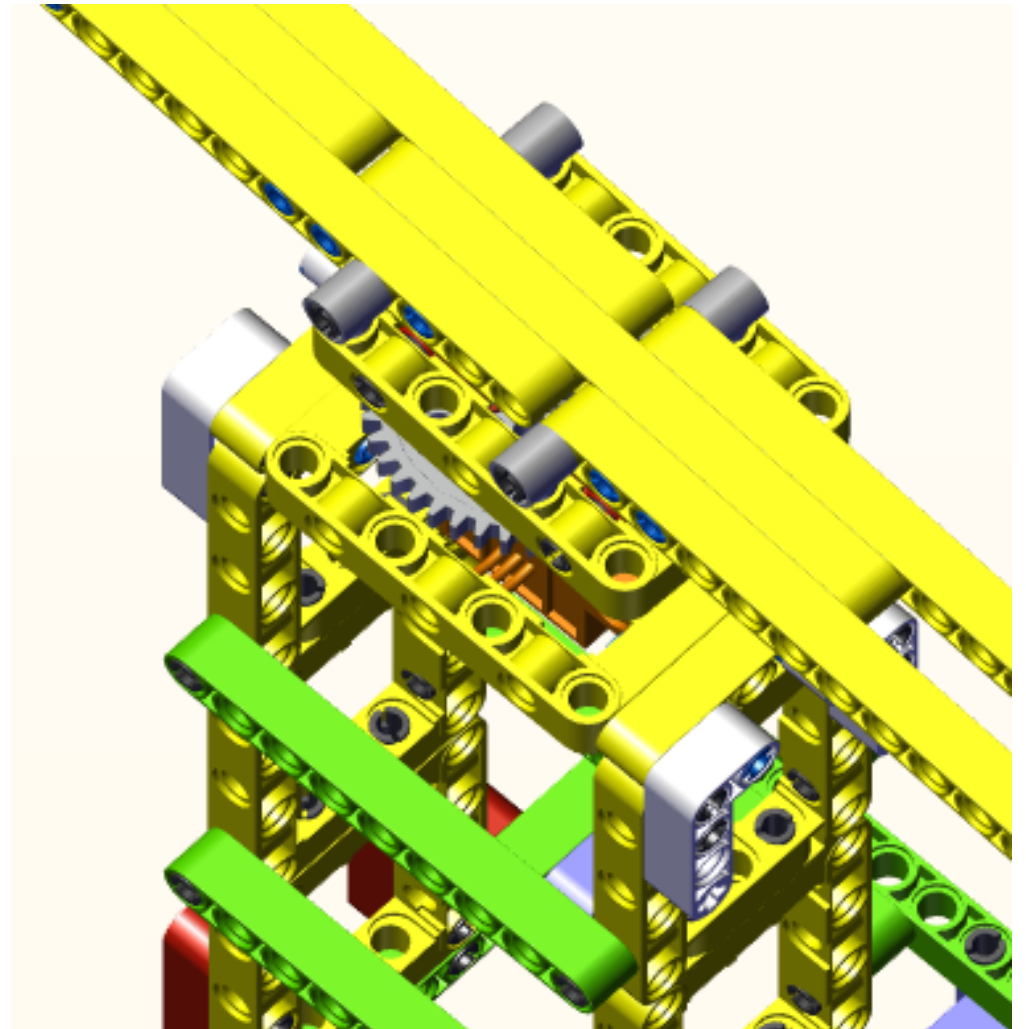
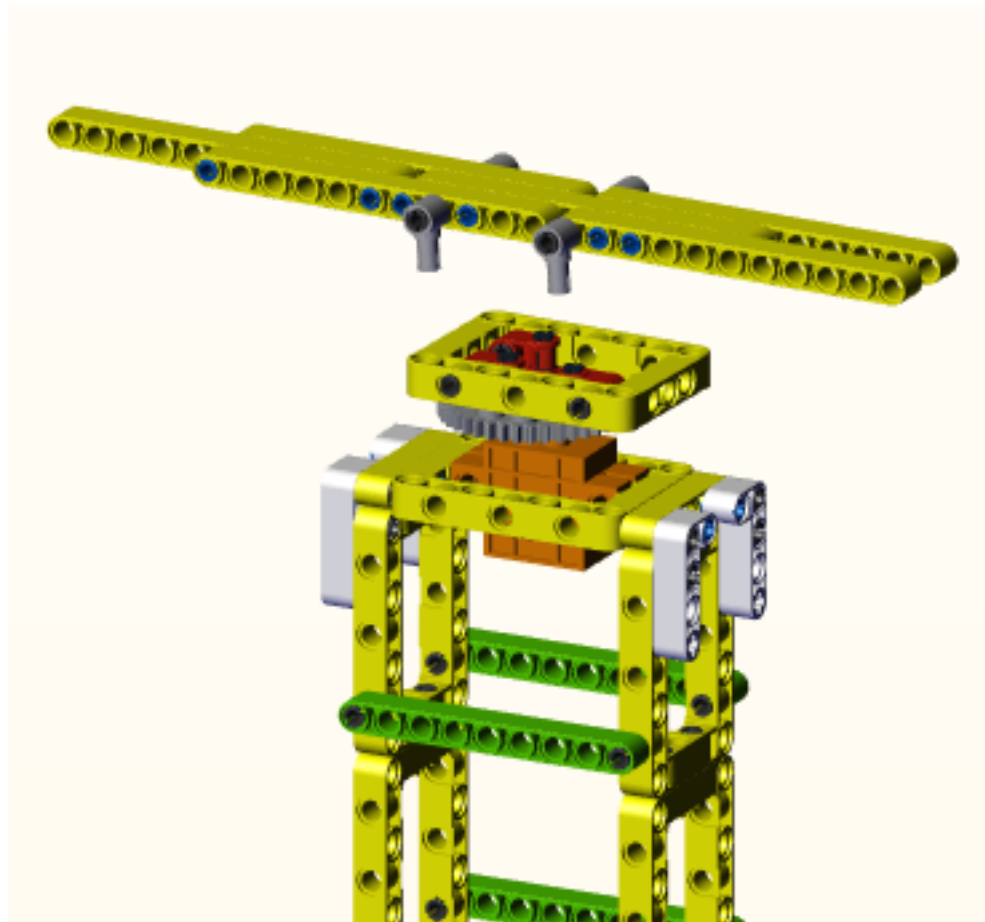
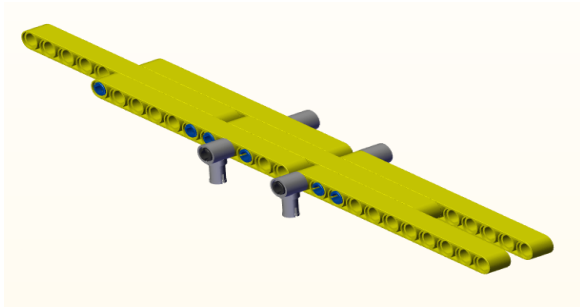


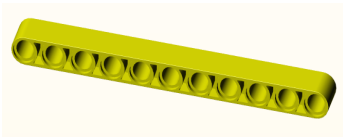
x4



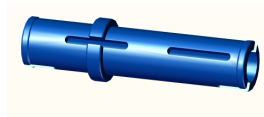
x4



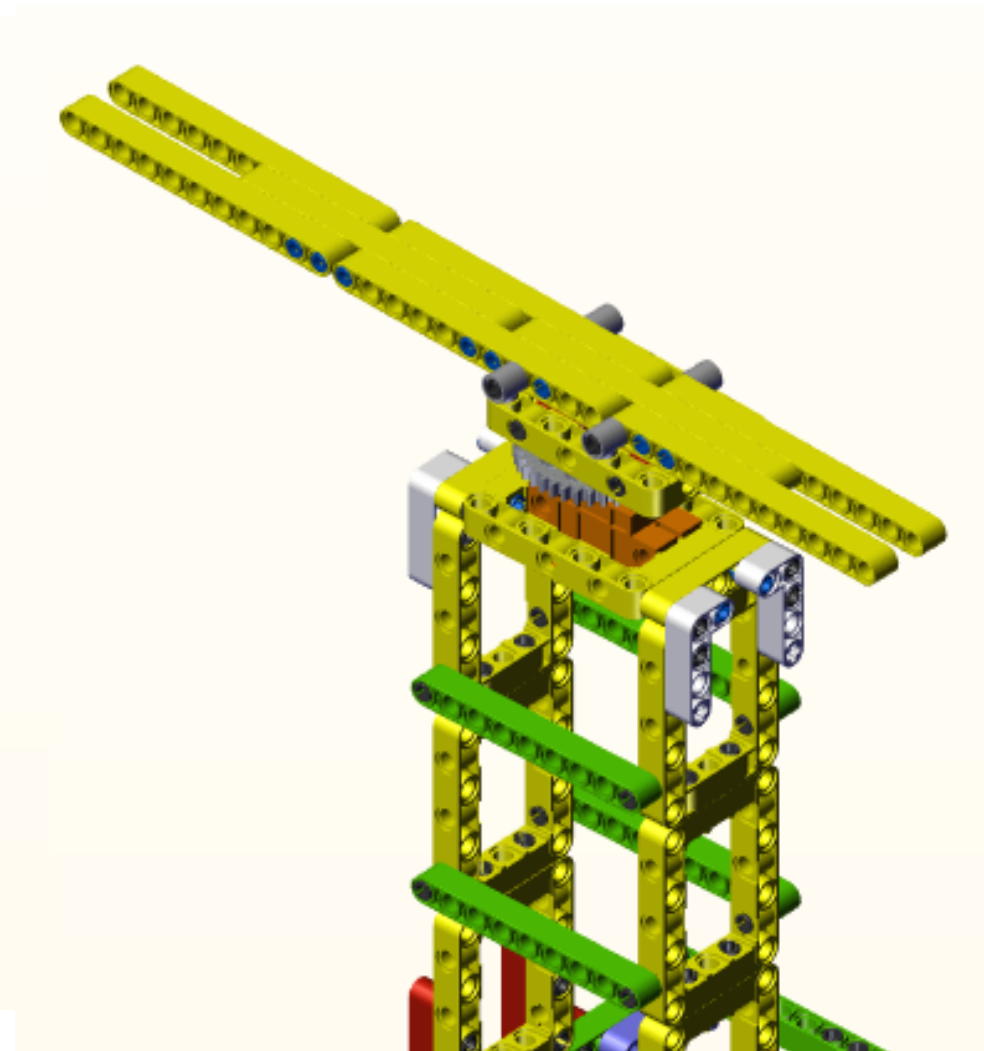
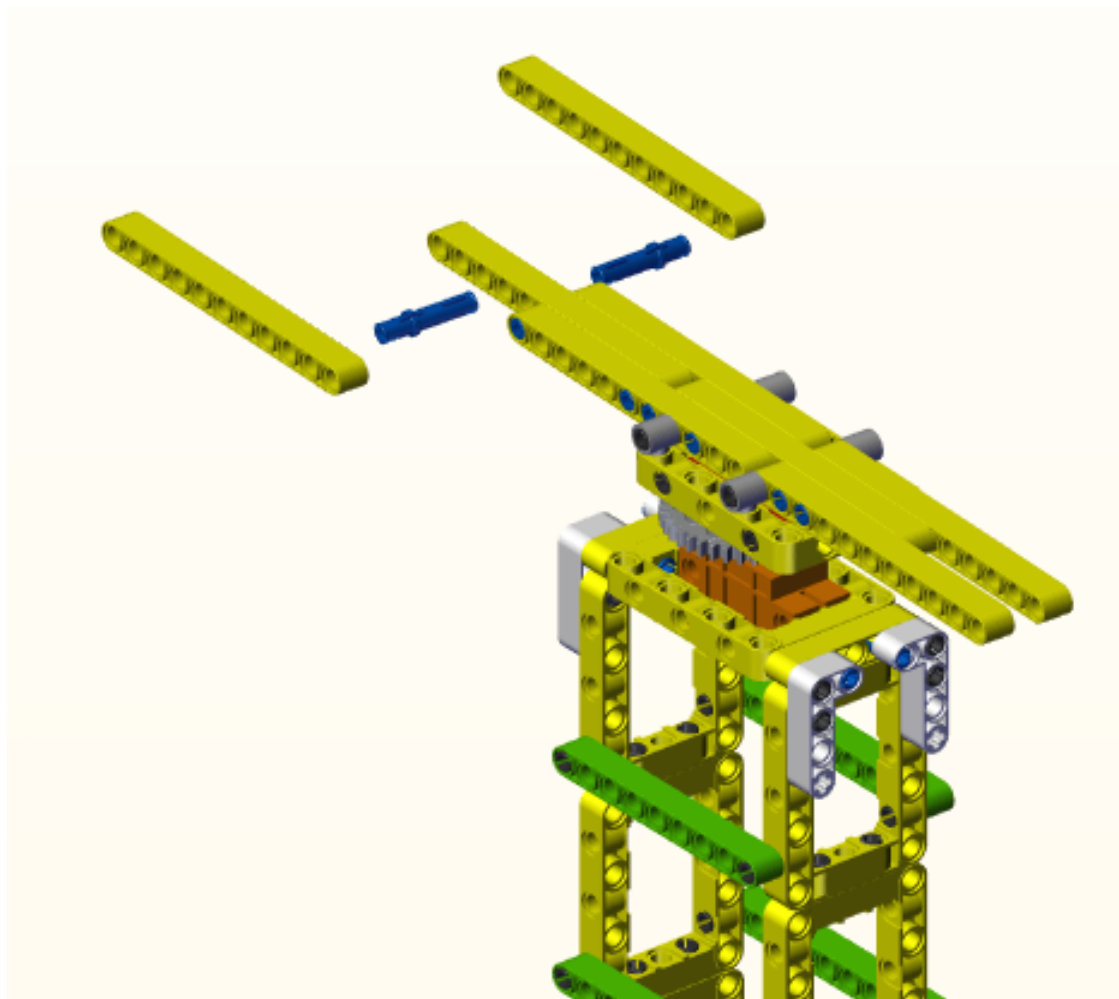


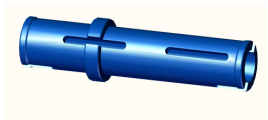


x2(11 holes)

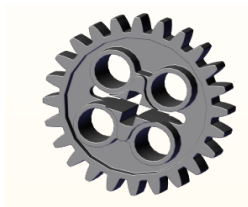


x2

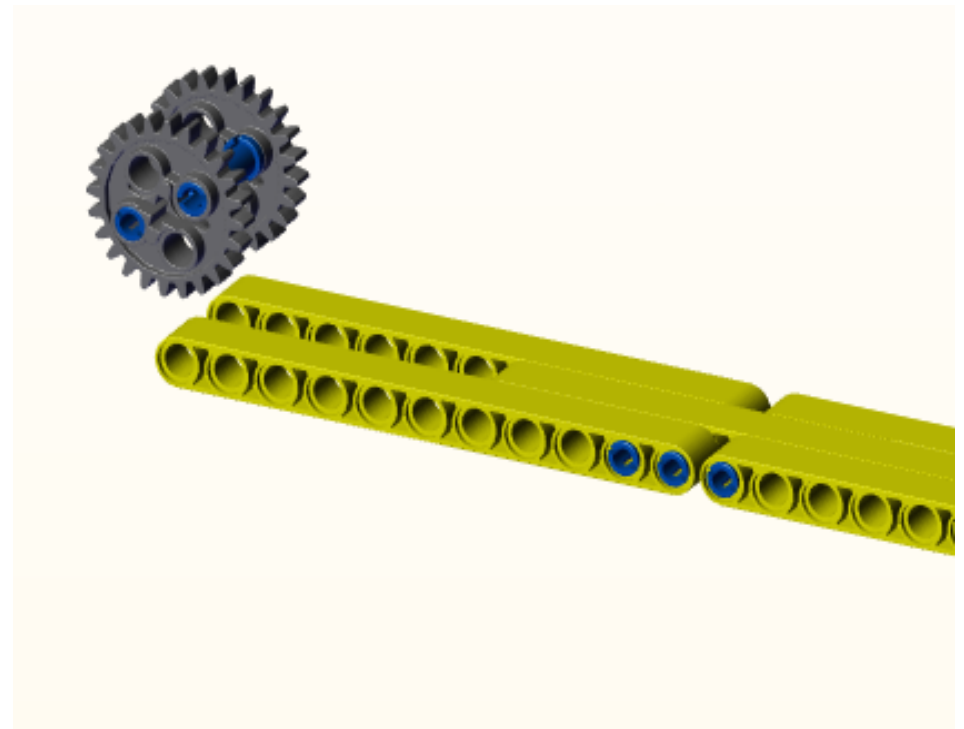
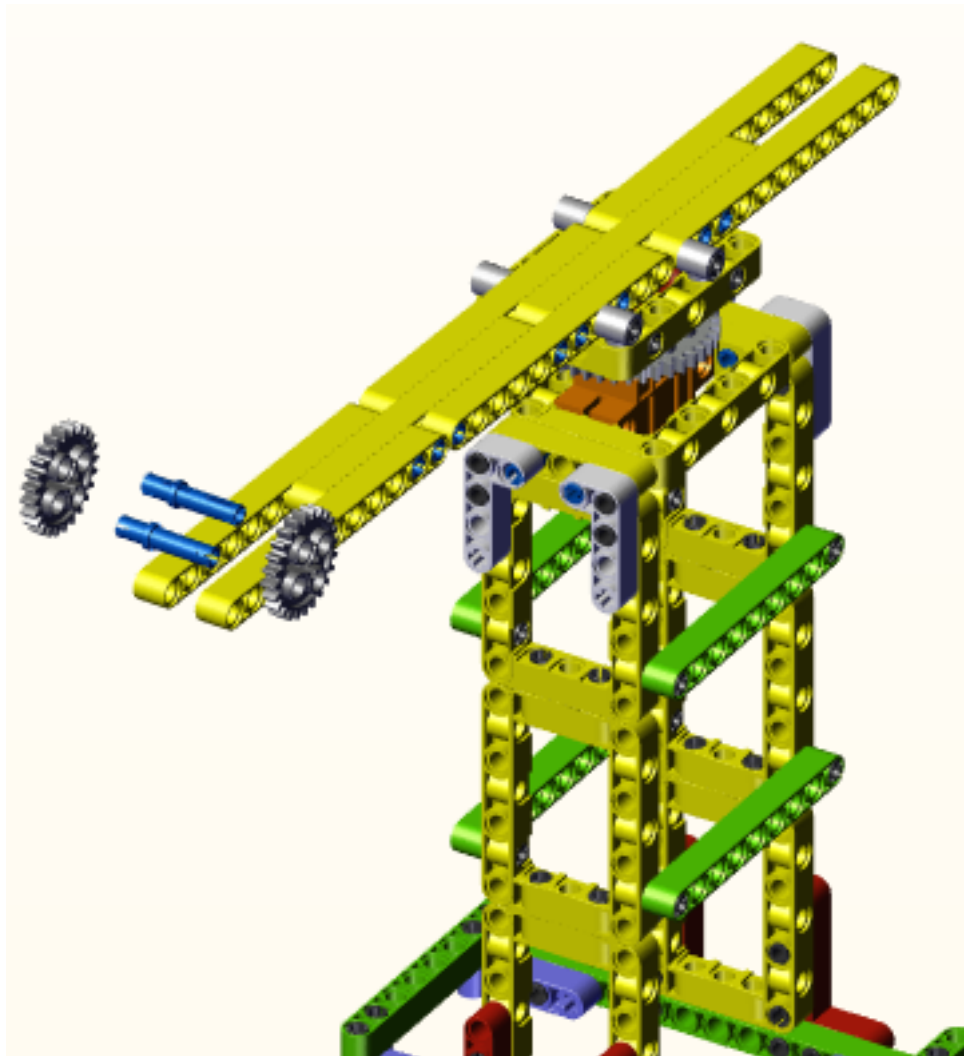




x2

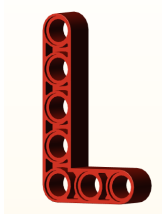


x2

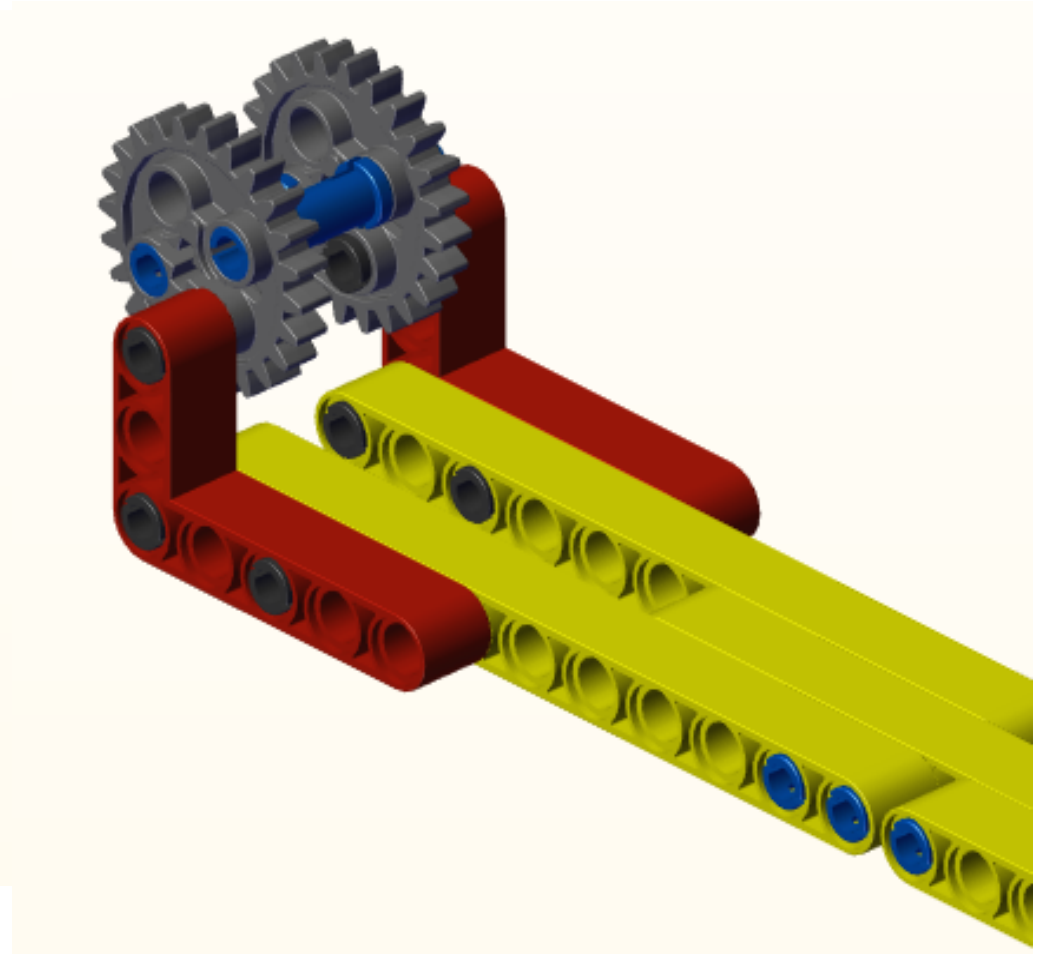
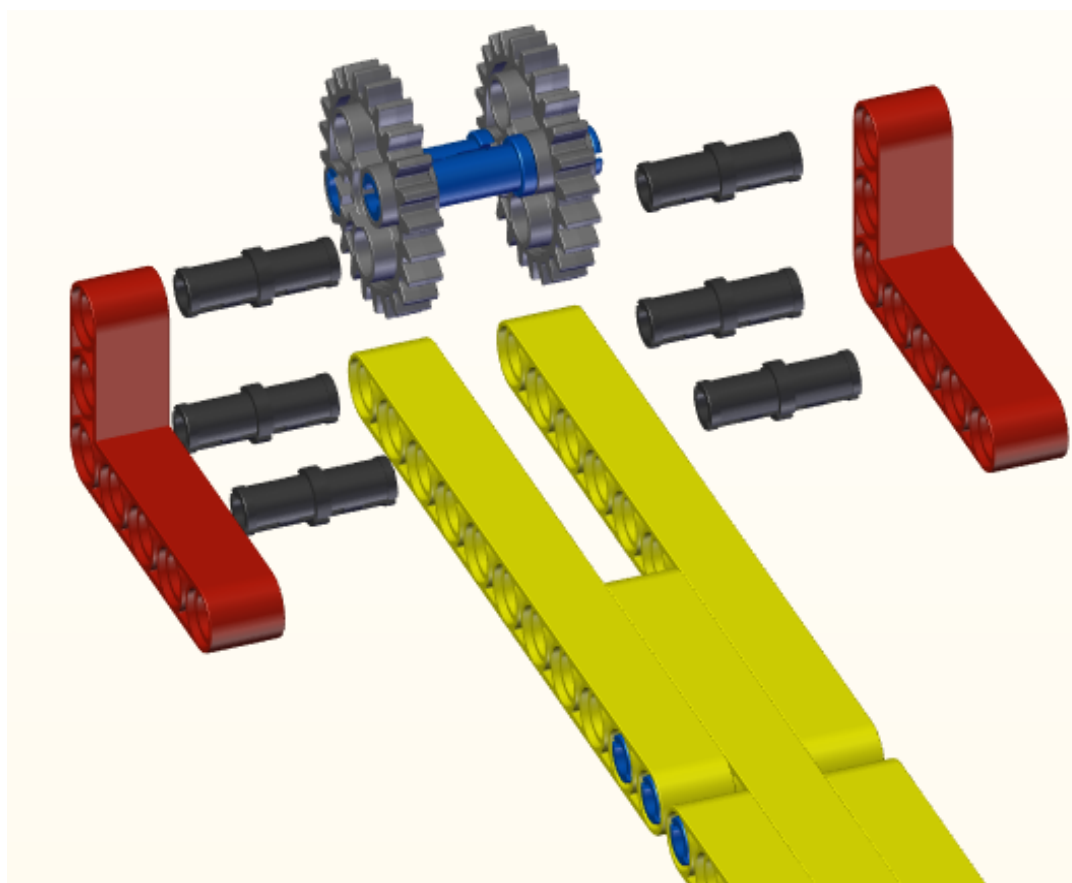




x6



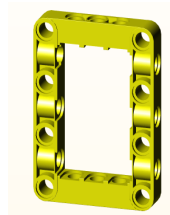
x2



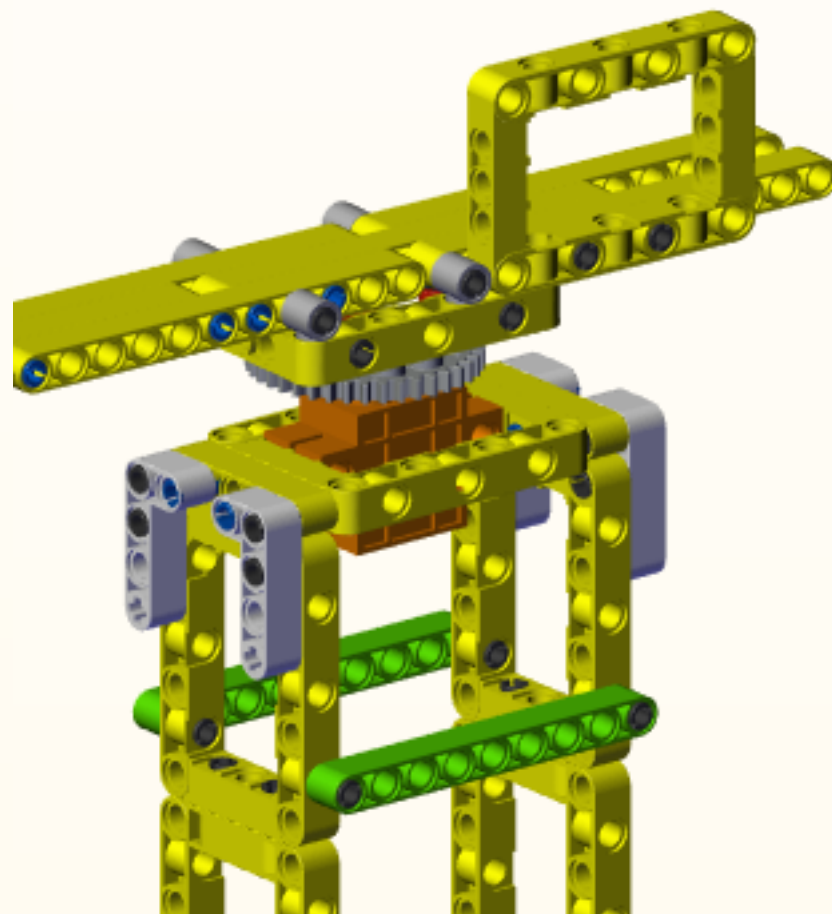
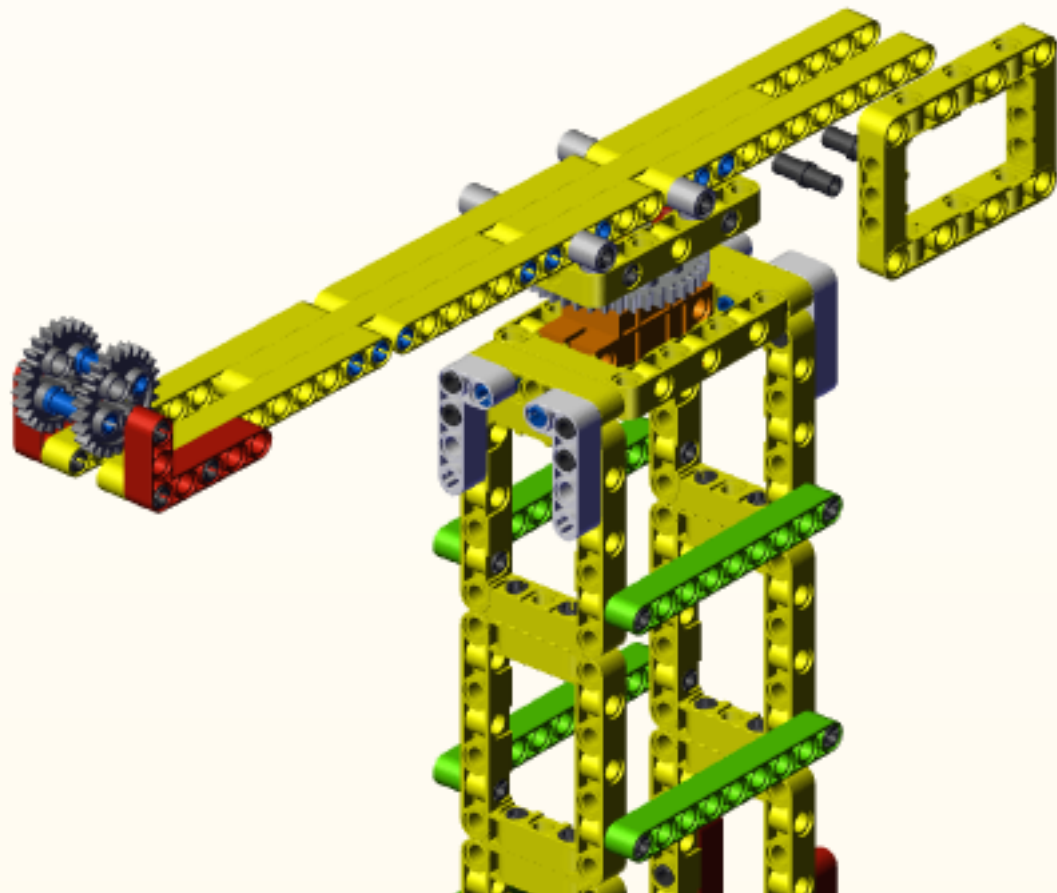




x2



x1

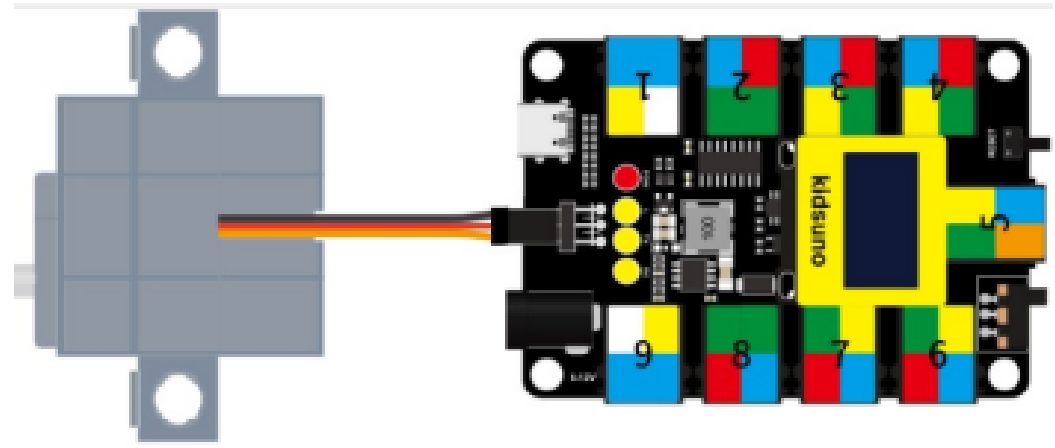




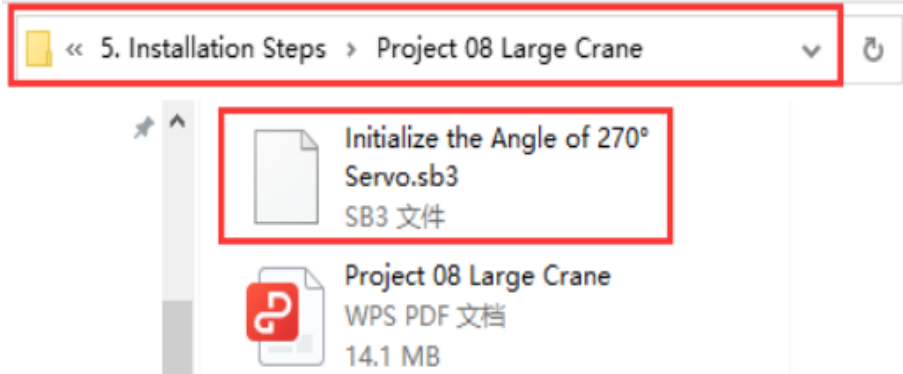
# Initialize the angle first when installing the 270 ° servo

## Wiring Diagram:

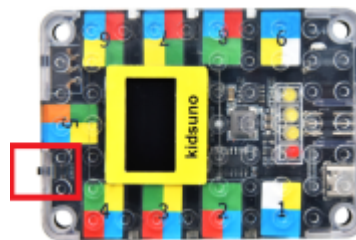
270°Servo	<u>Kidsuno Mainboard</u>
Brown Wire	G
Red Wire	5V
Orange Wire	D12



Code for initializing the servo :

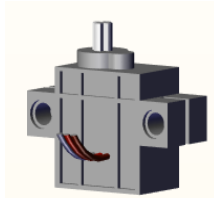


Note: After uploading the code to initialize the 270° servo angle, click the reset button on the kidsuno mainboard.

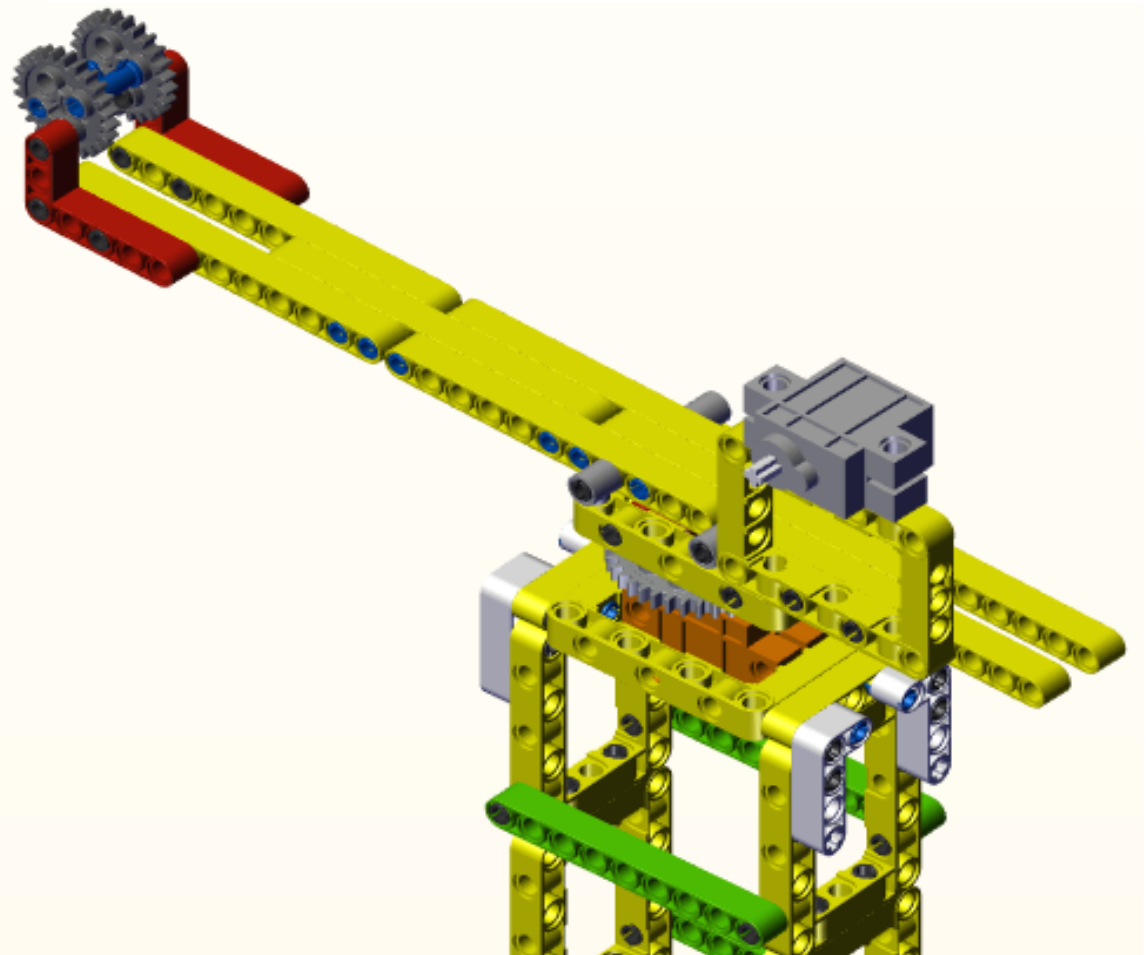
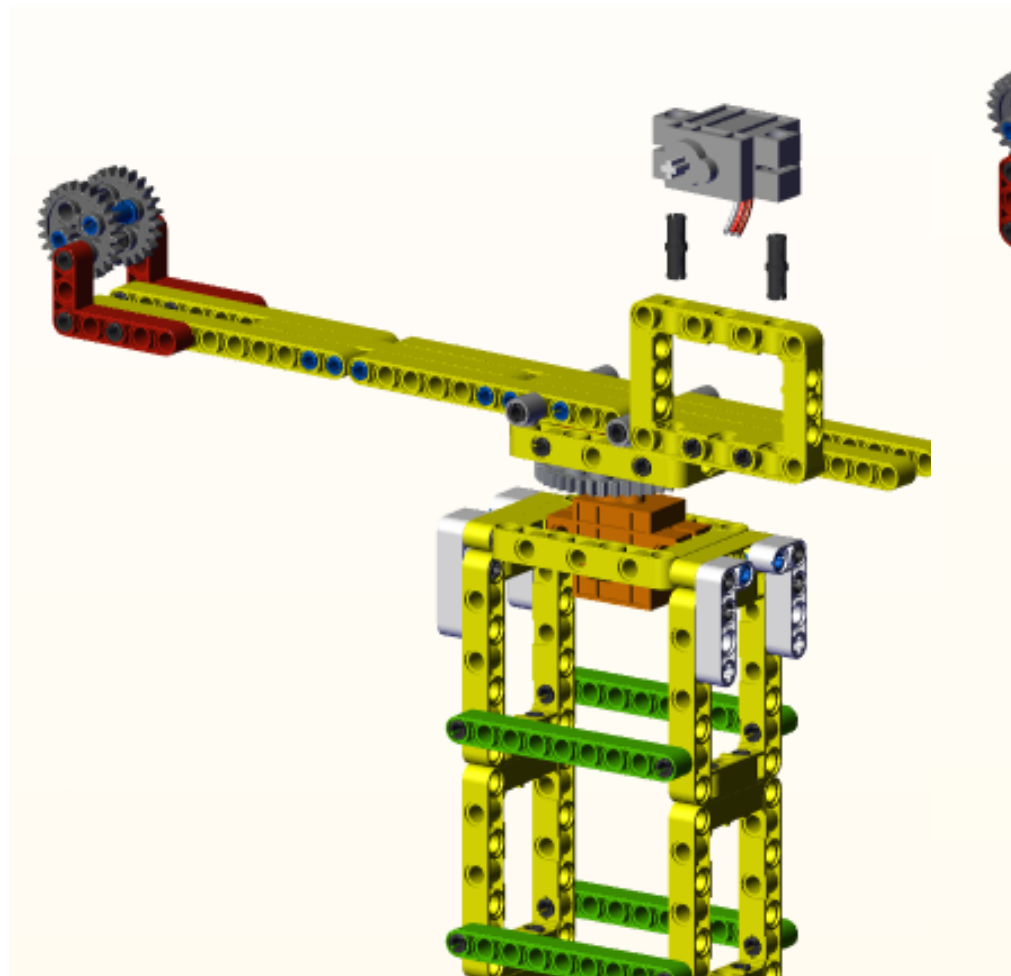




x2

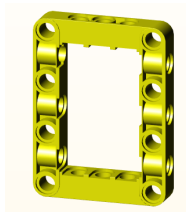


x1

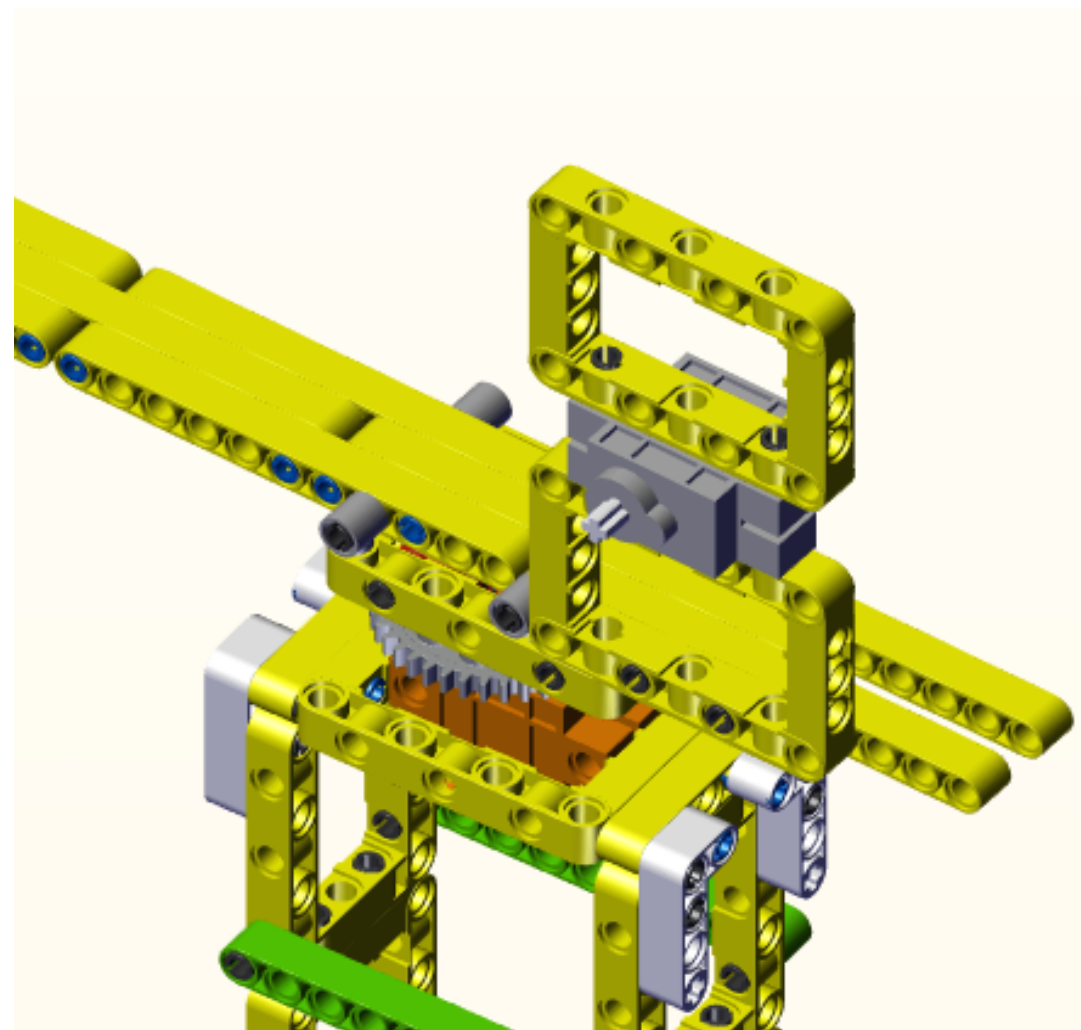
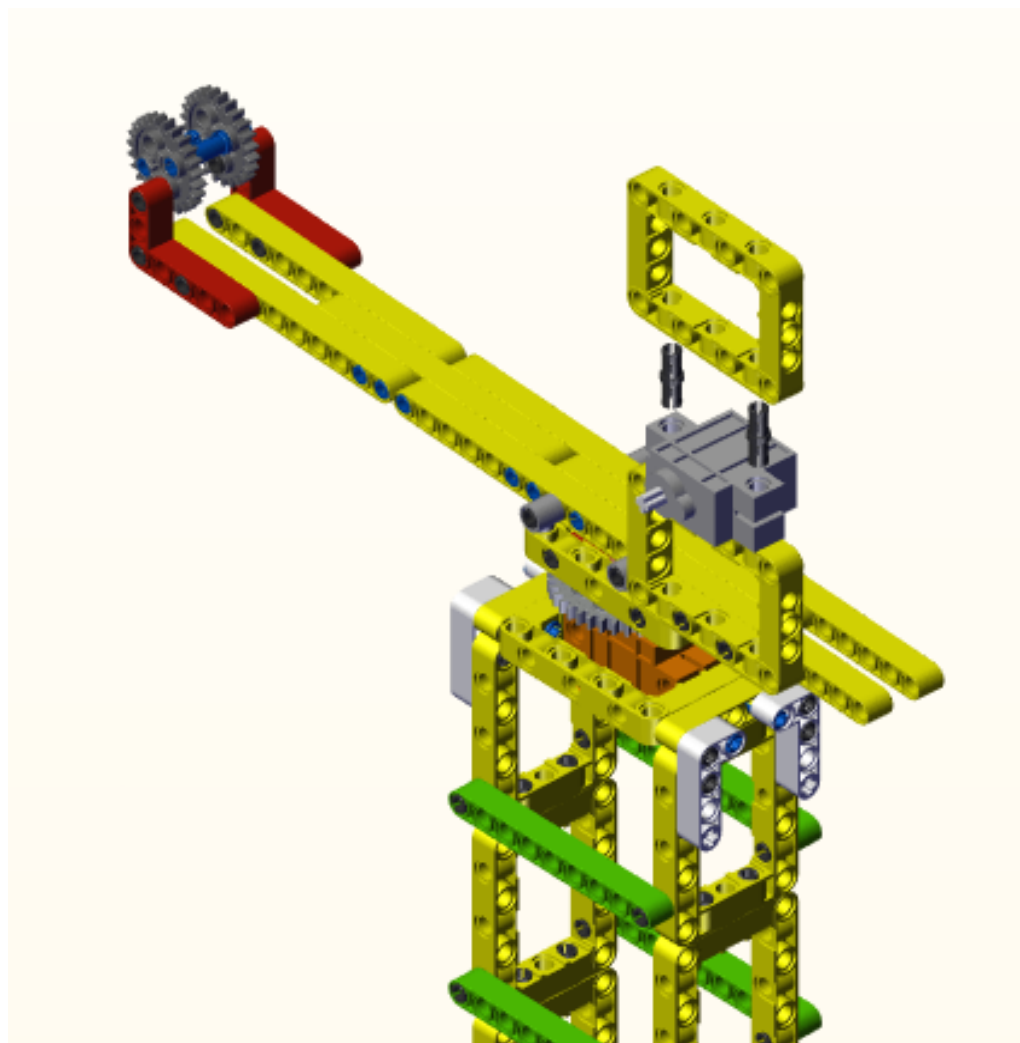


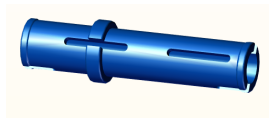


x2

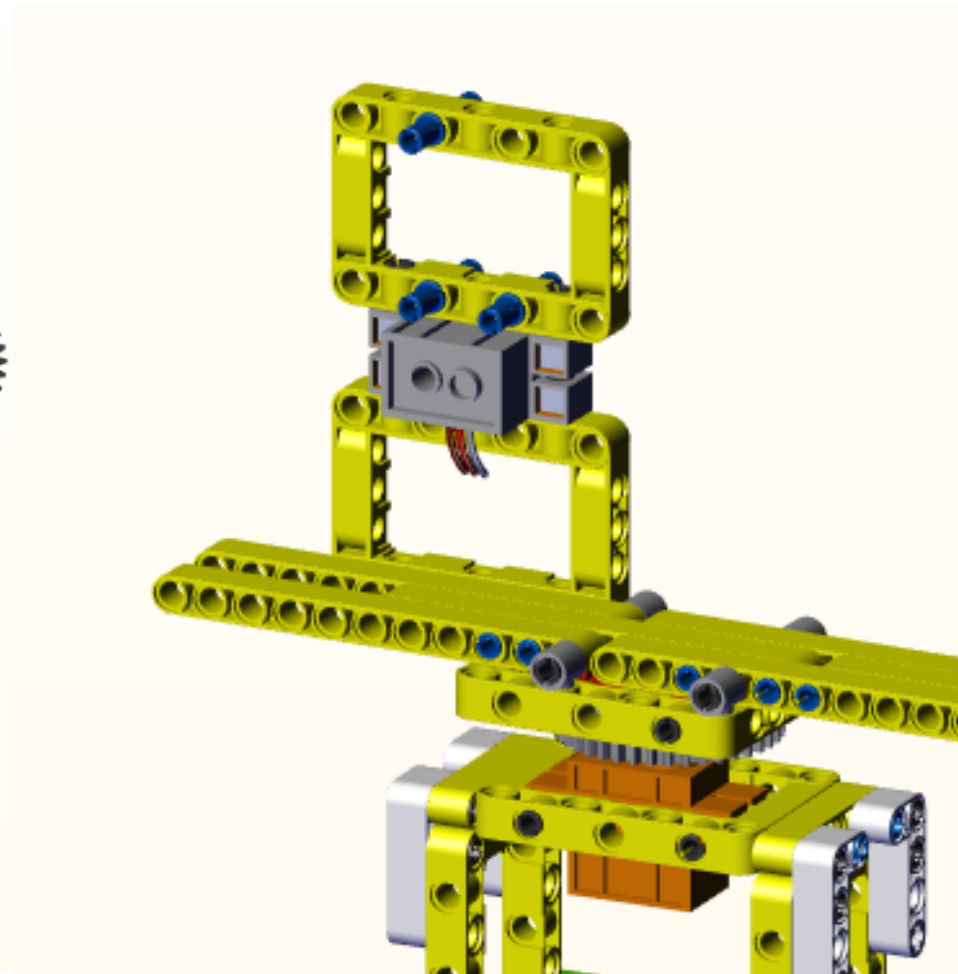
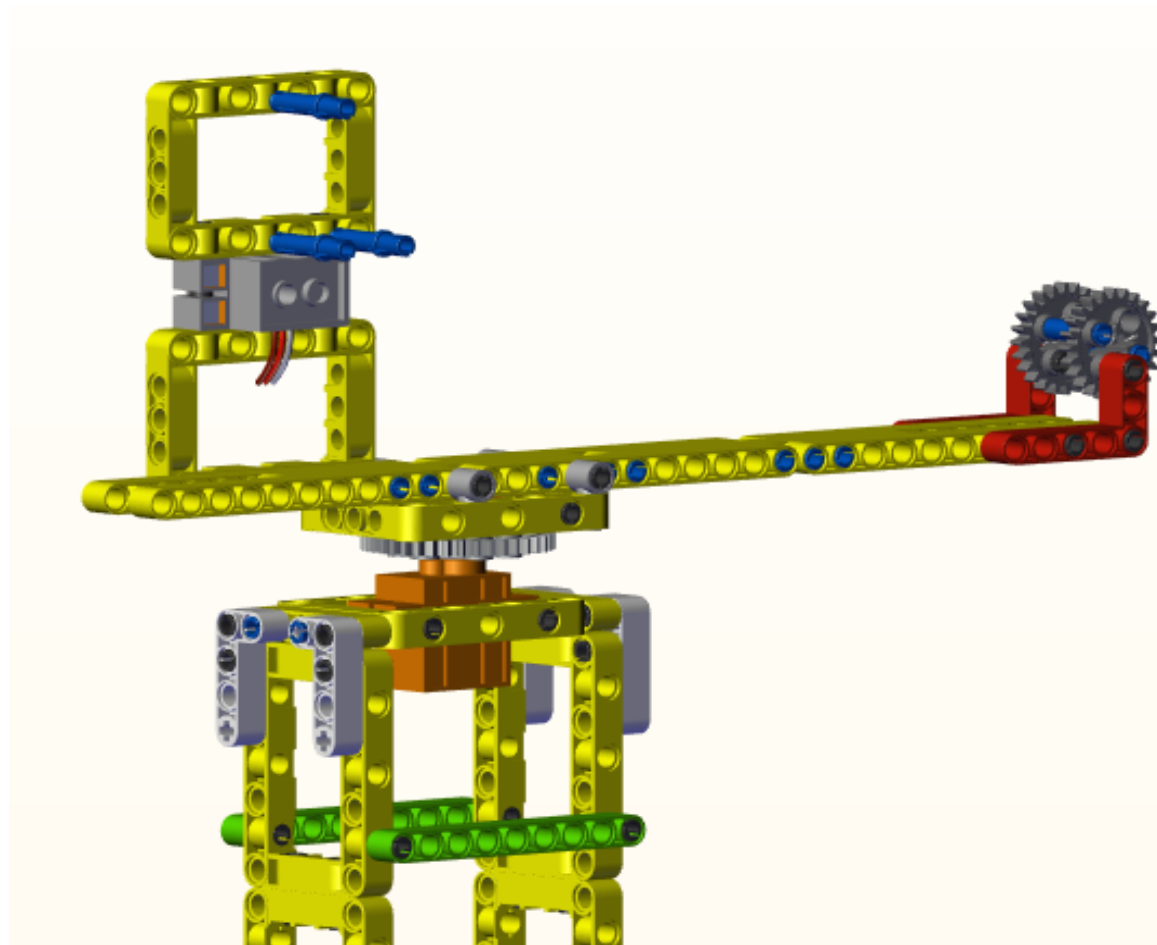


x1



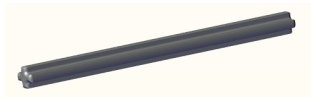


x3





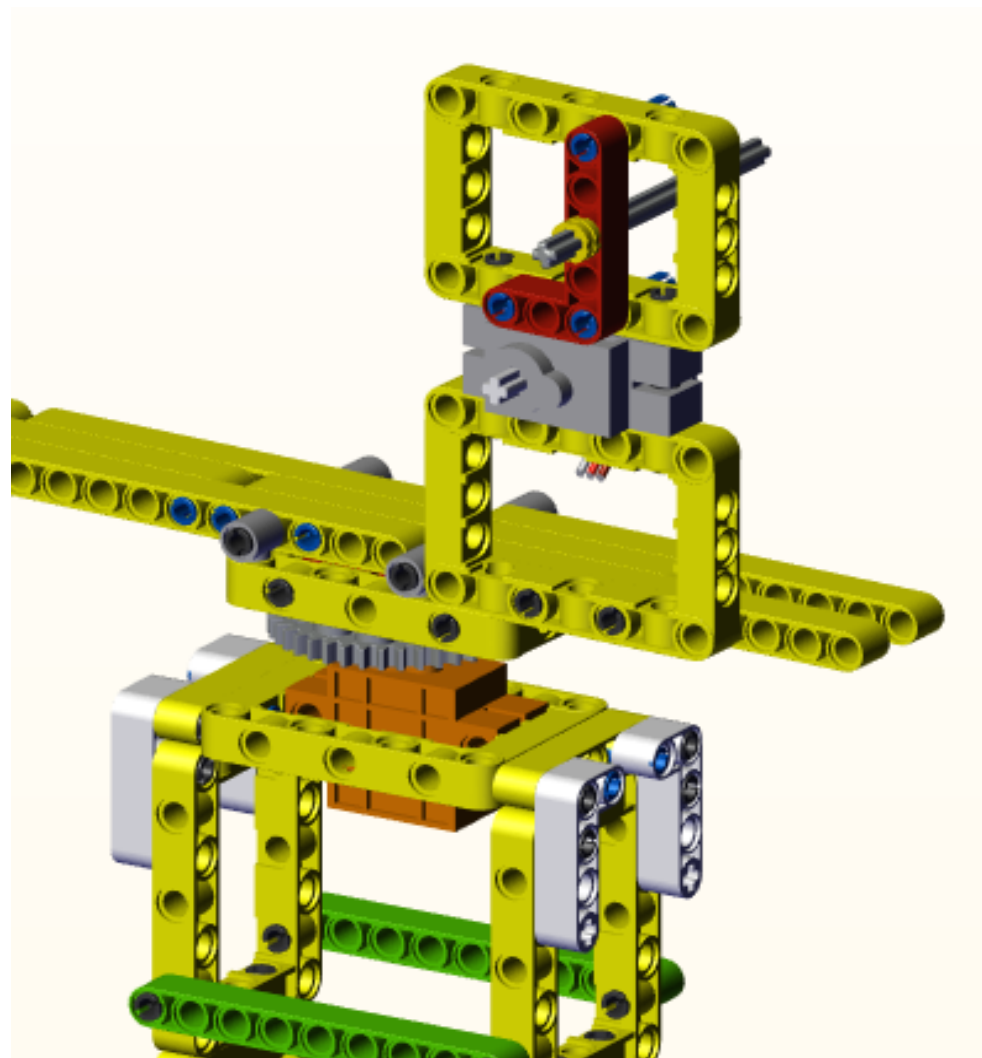
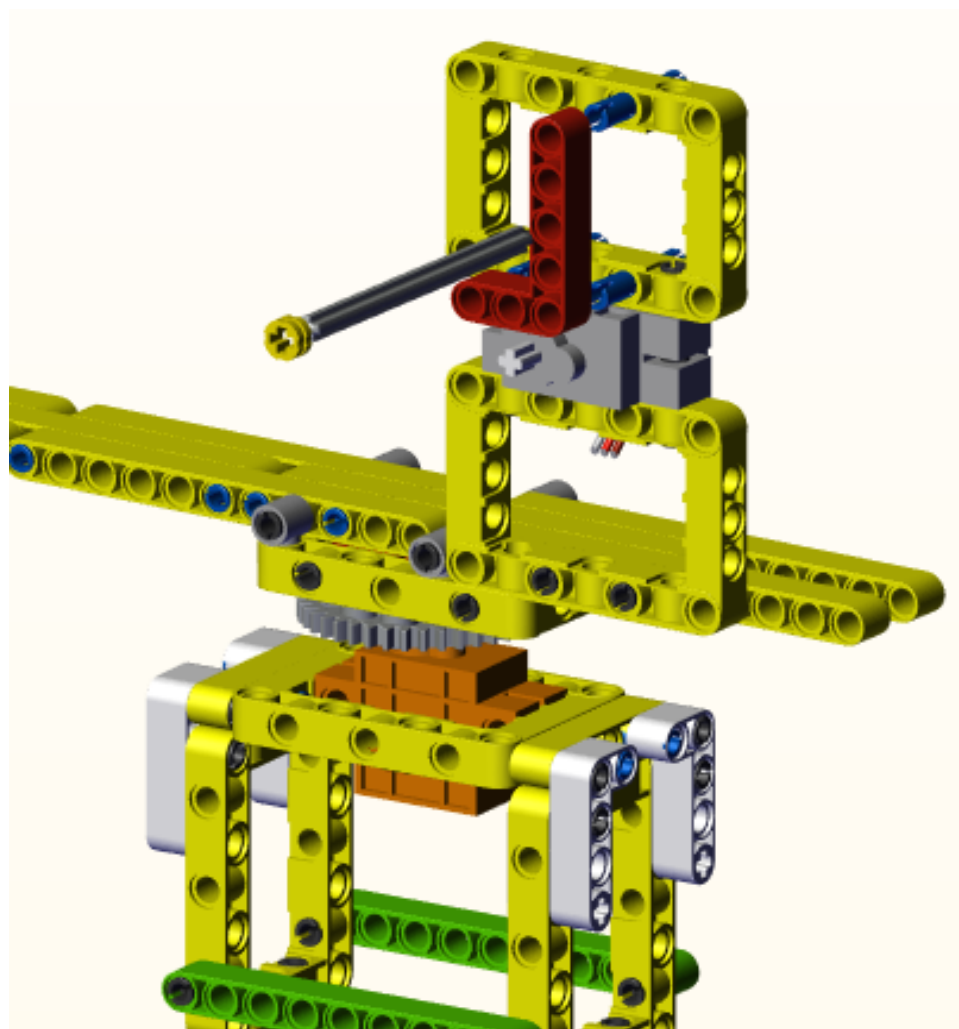
x1



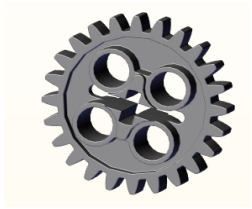
x1(6.4cm)



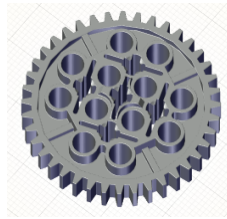
x1



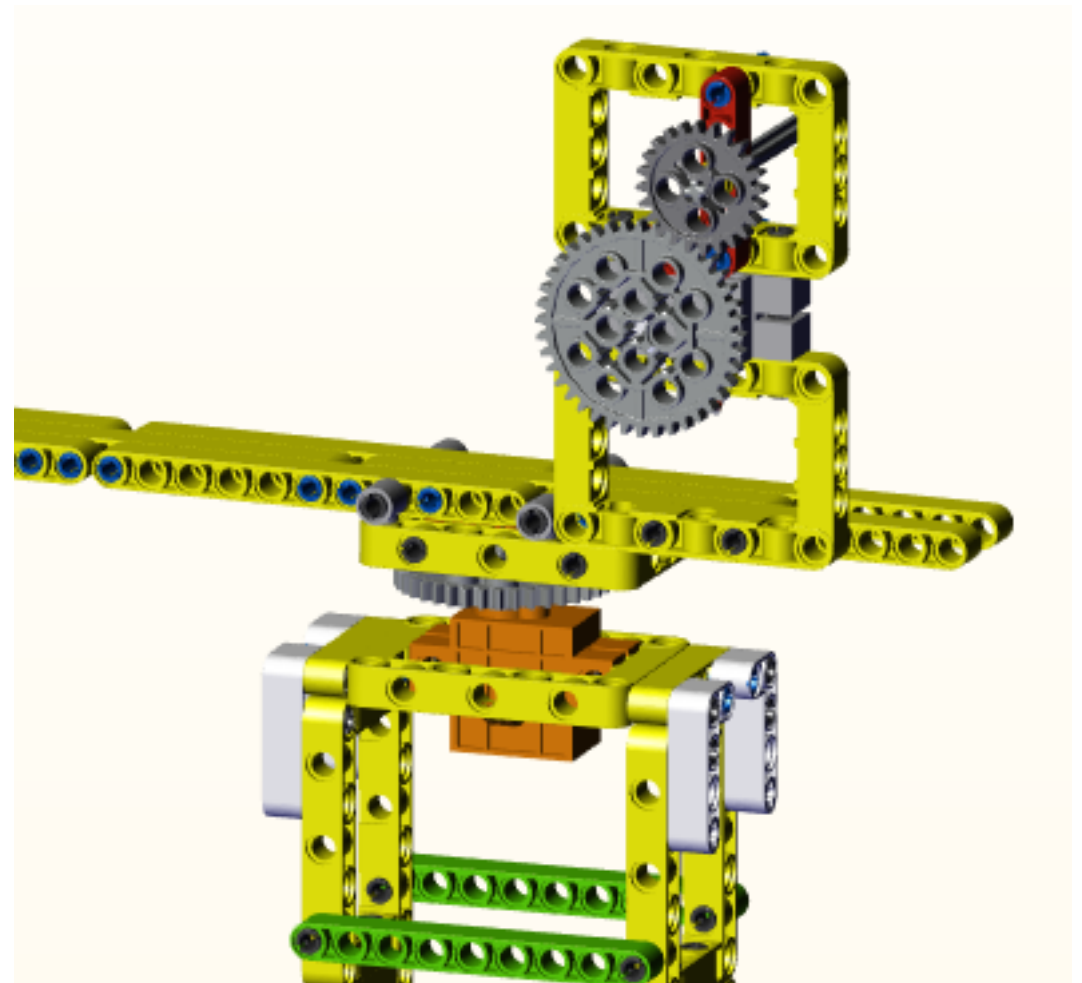
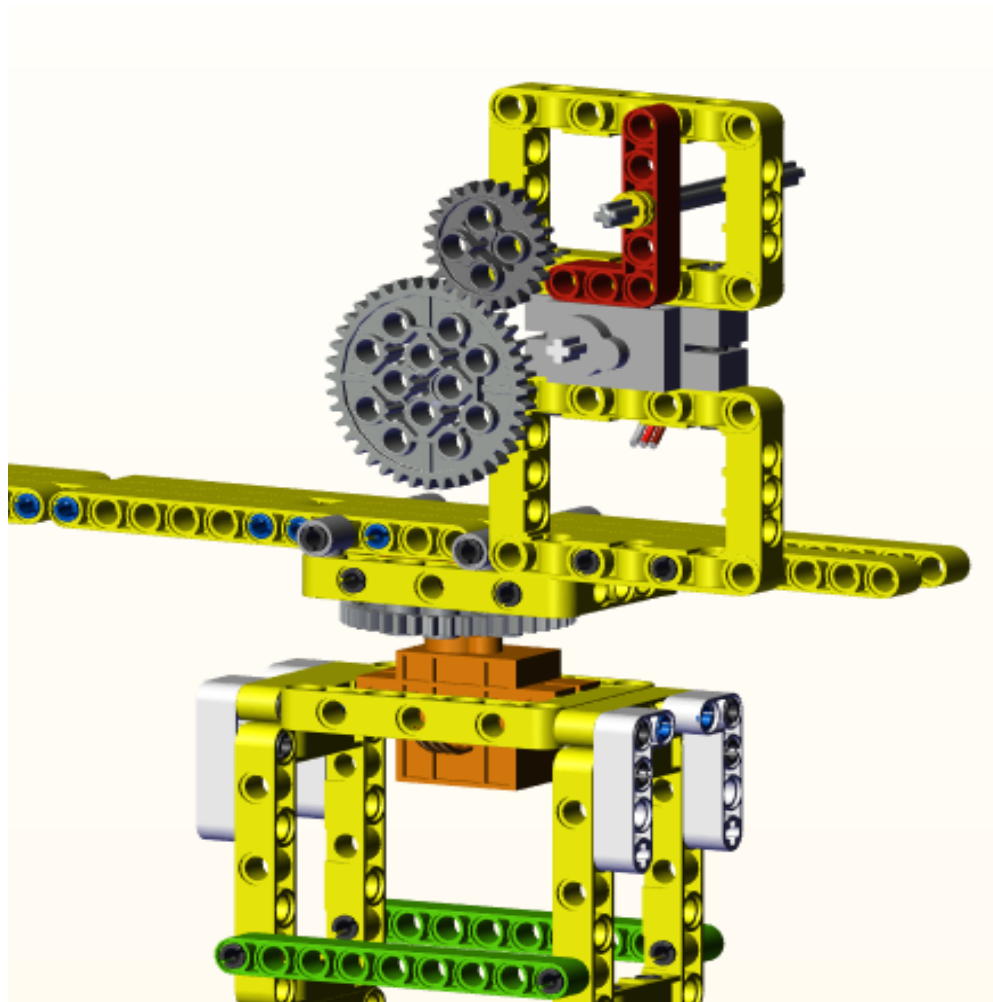


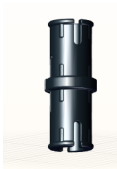


x1

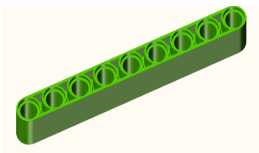


x1

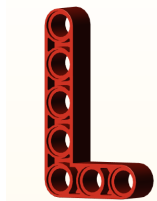




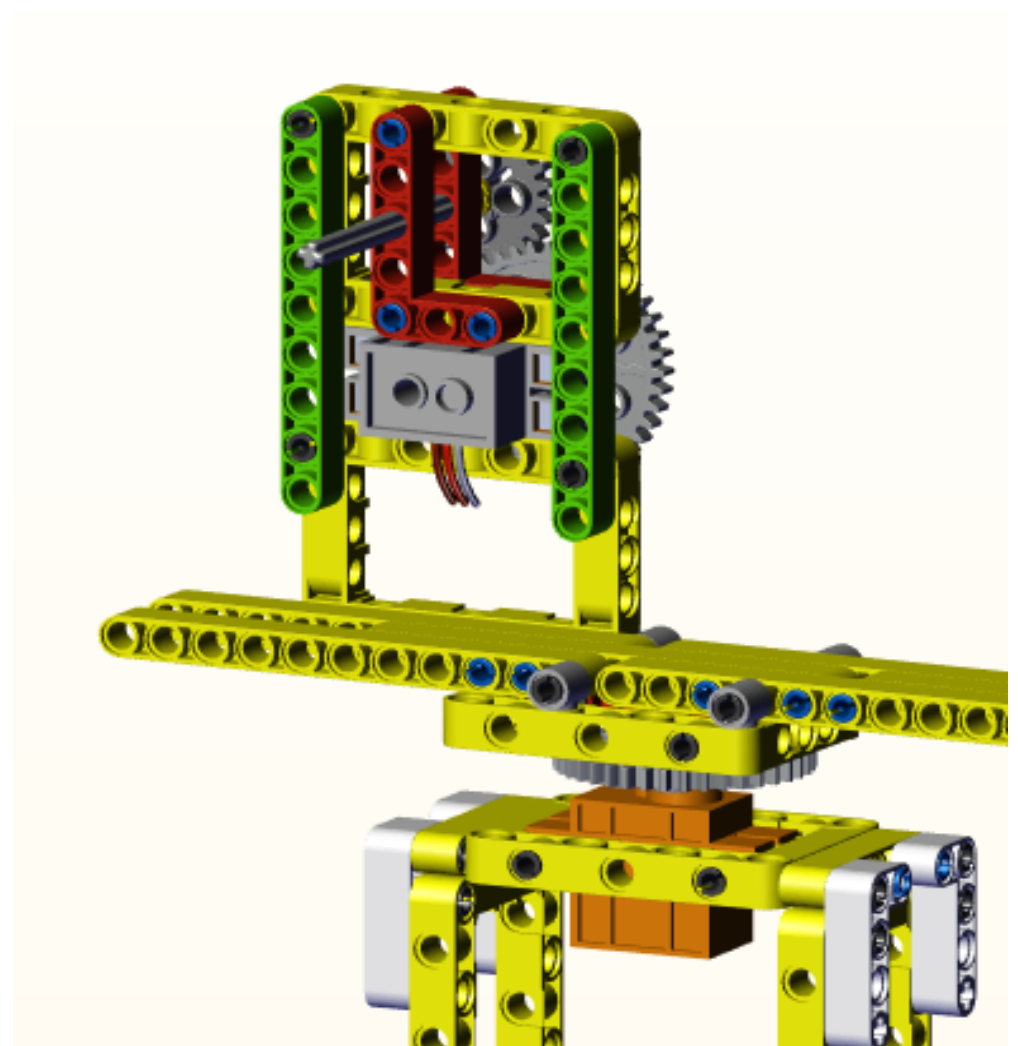
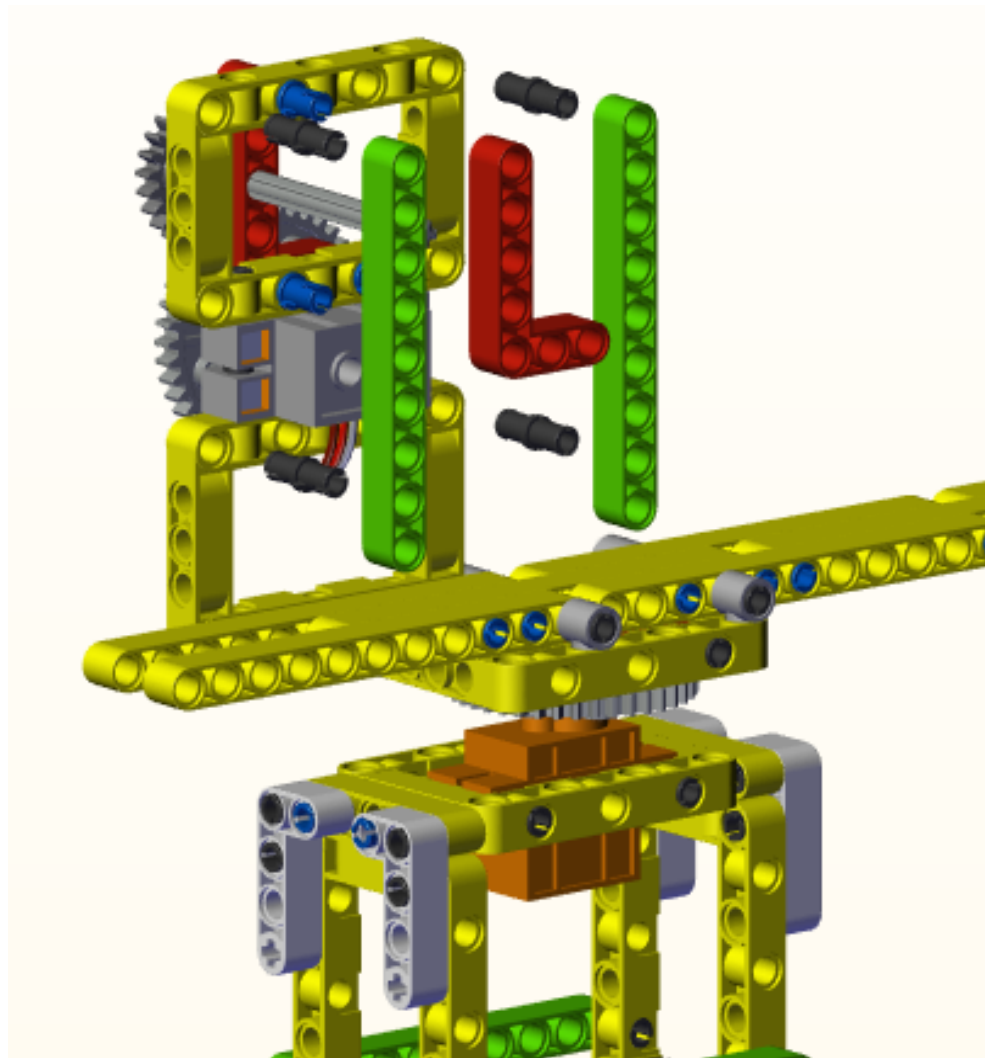
x4

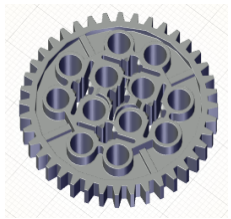


x2(9 holes)



x1

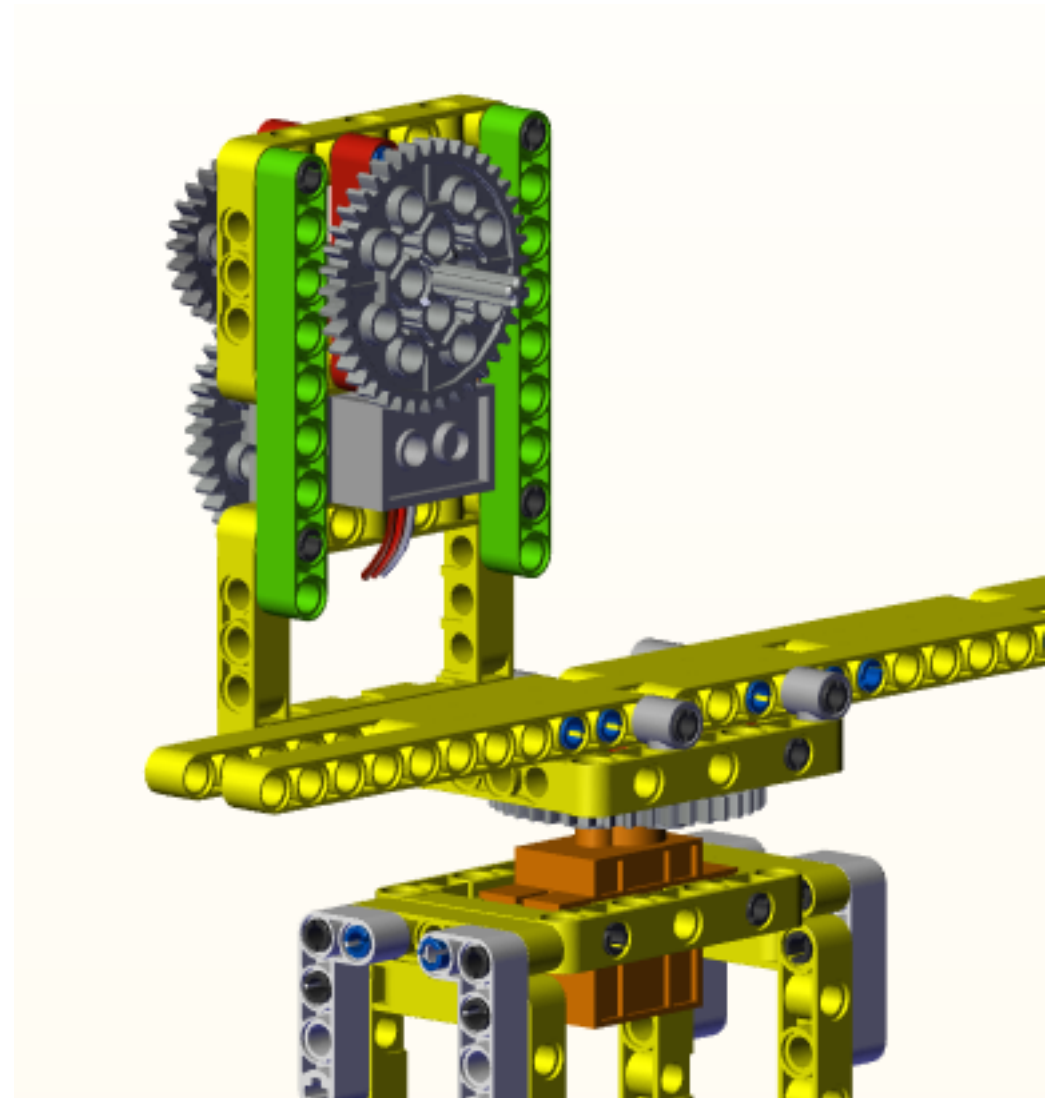
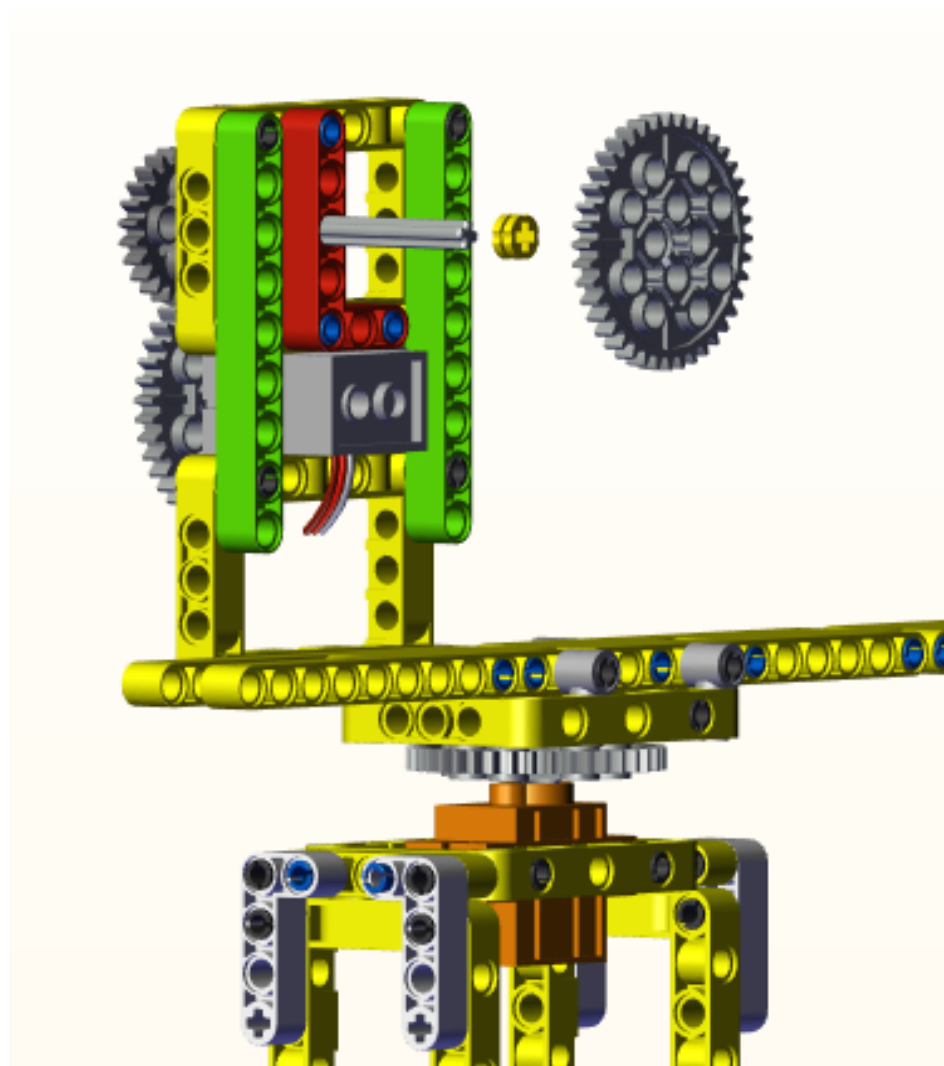




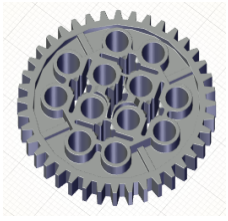
x1



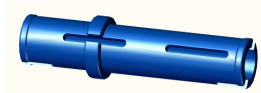
x1



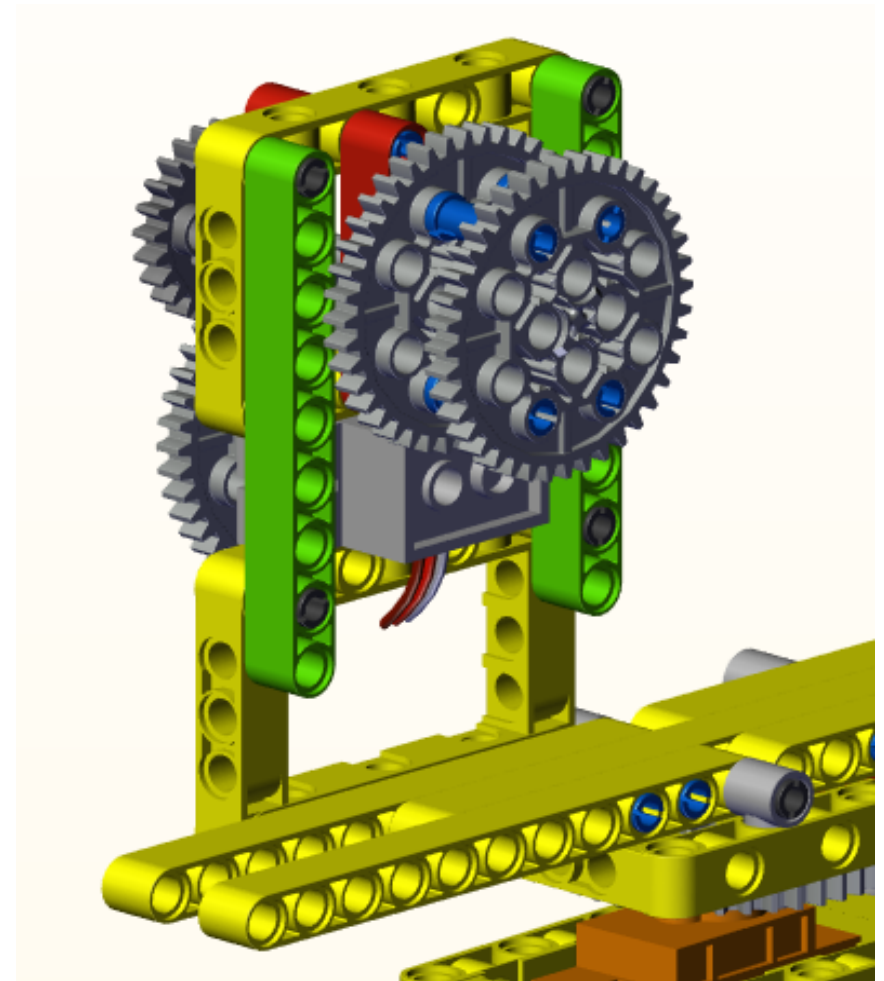
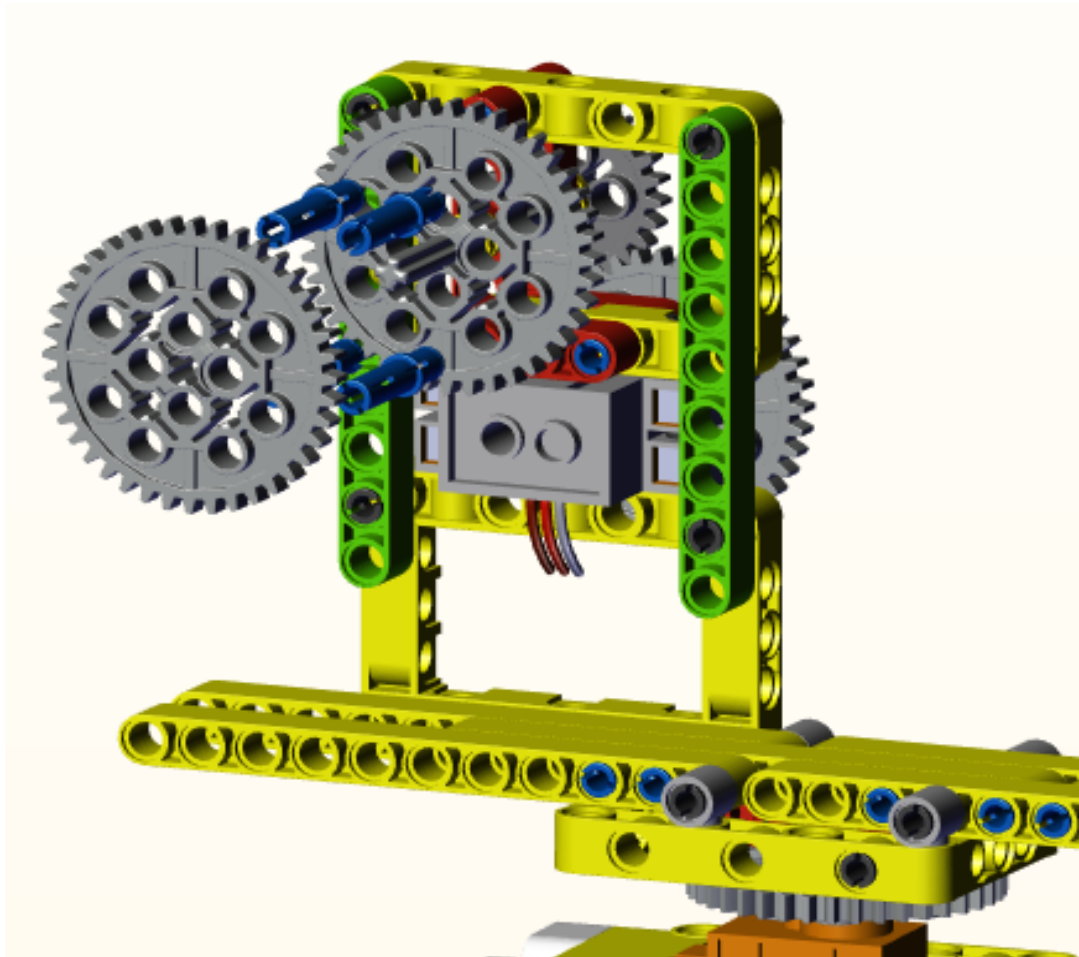




x1

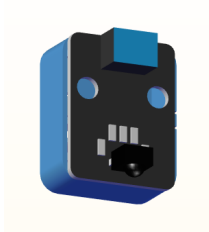


x4

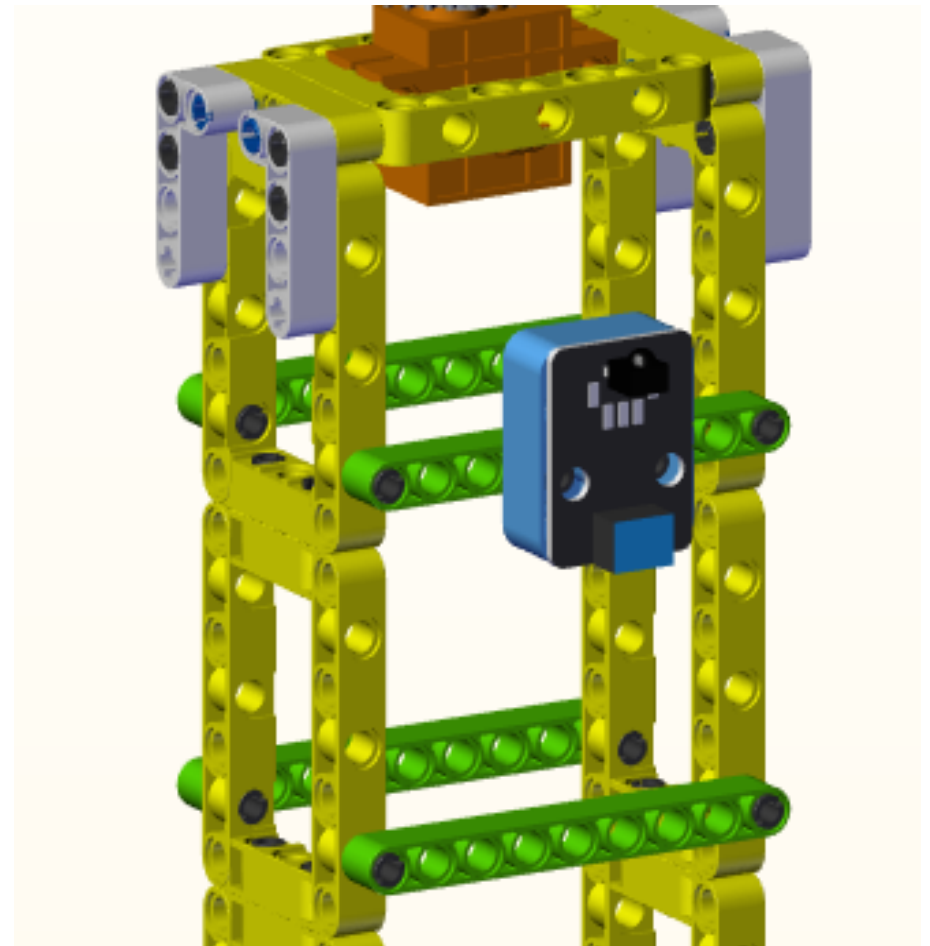
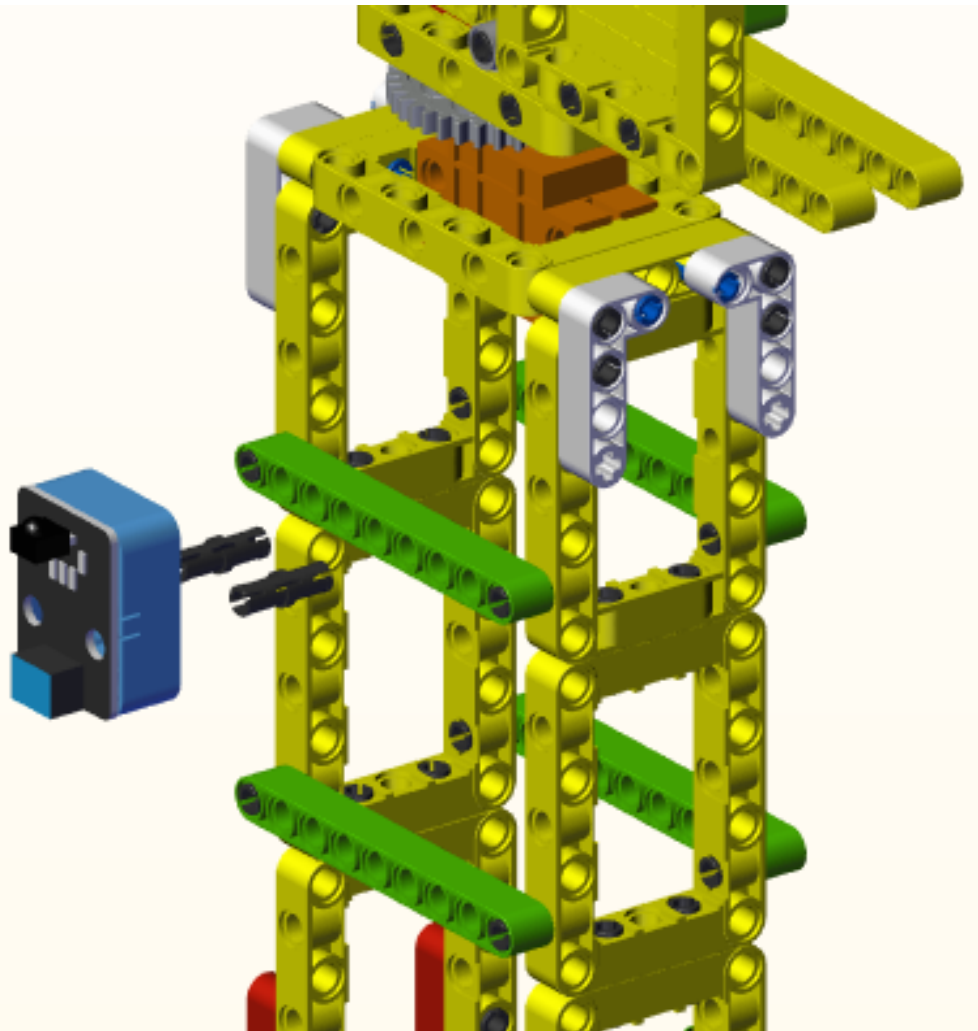




x2

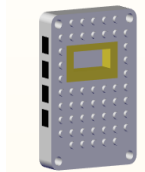


x1

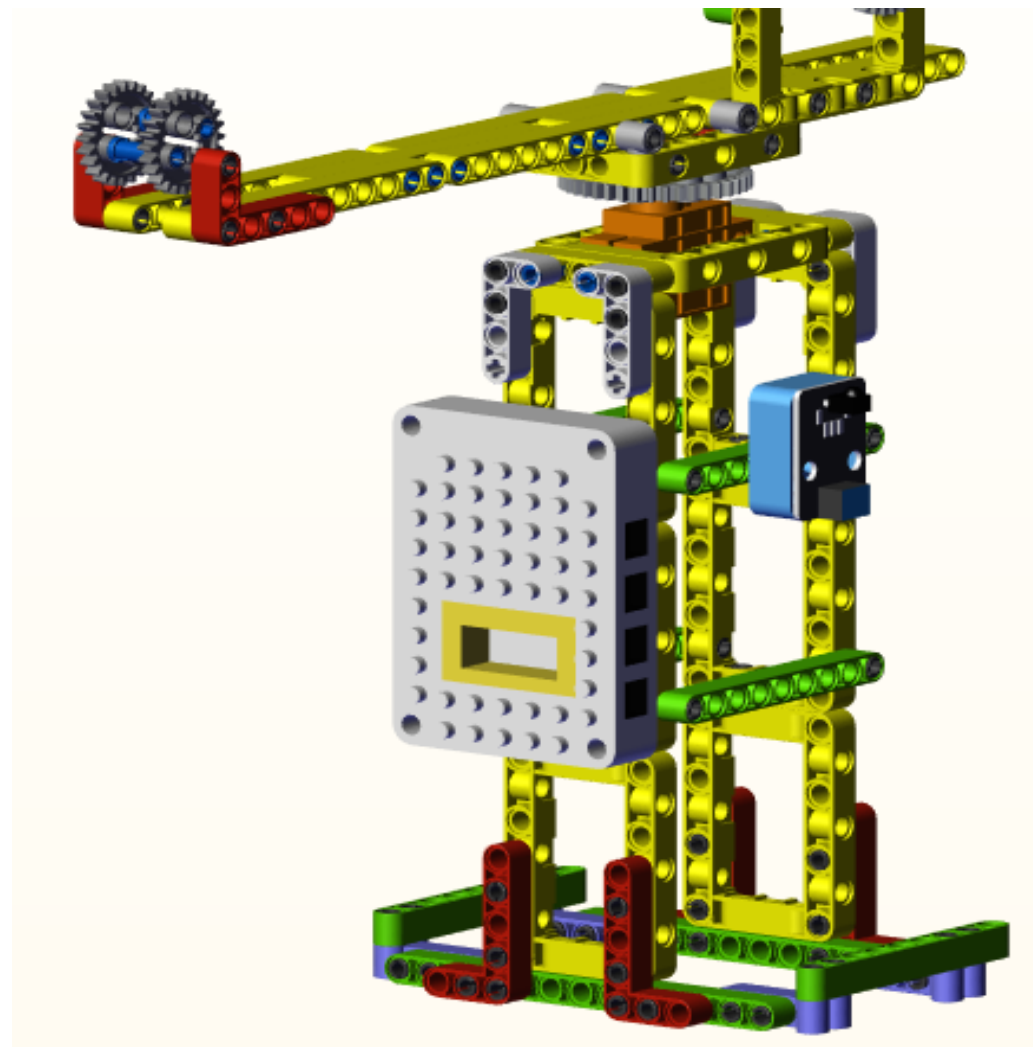
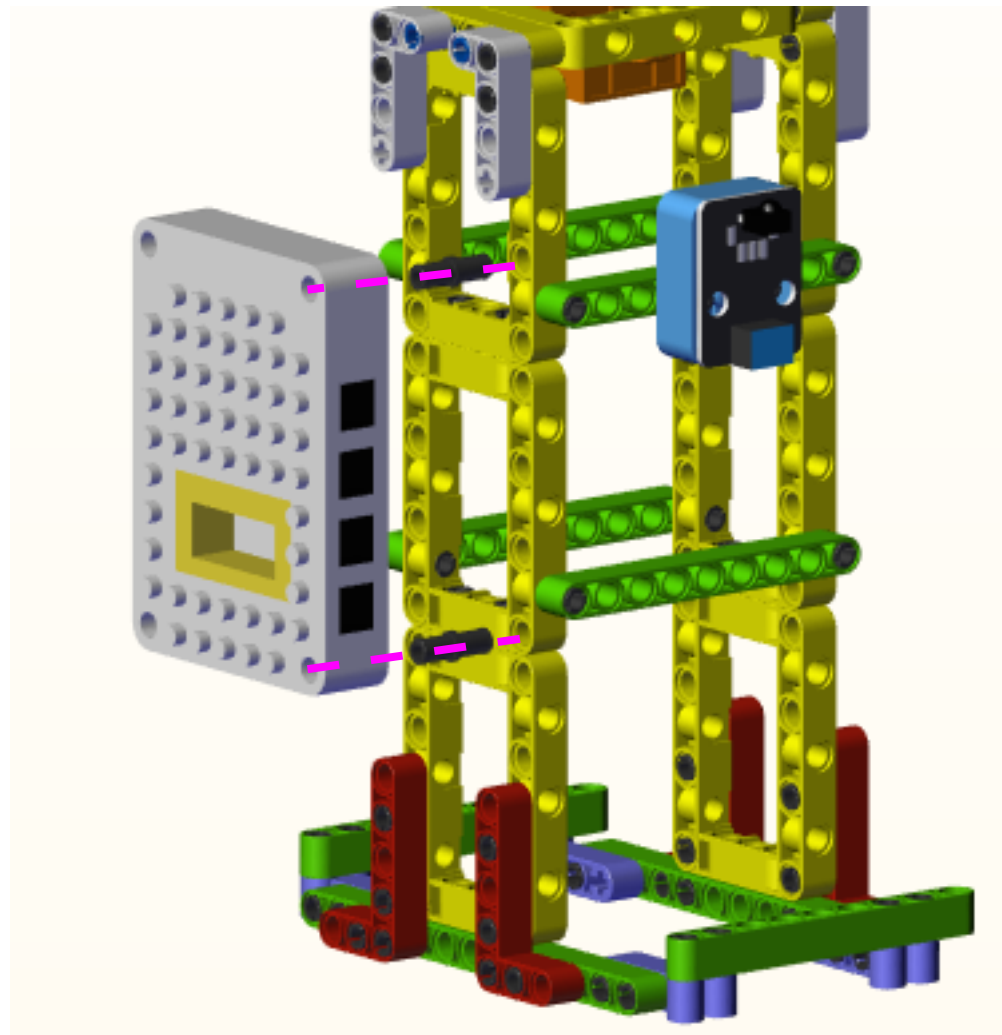


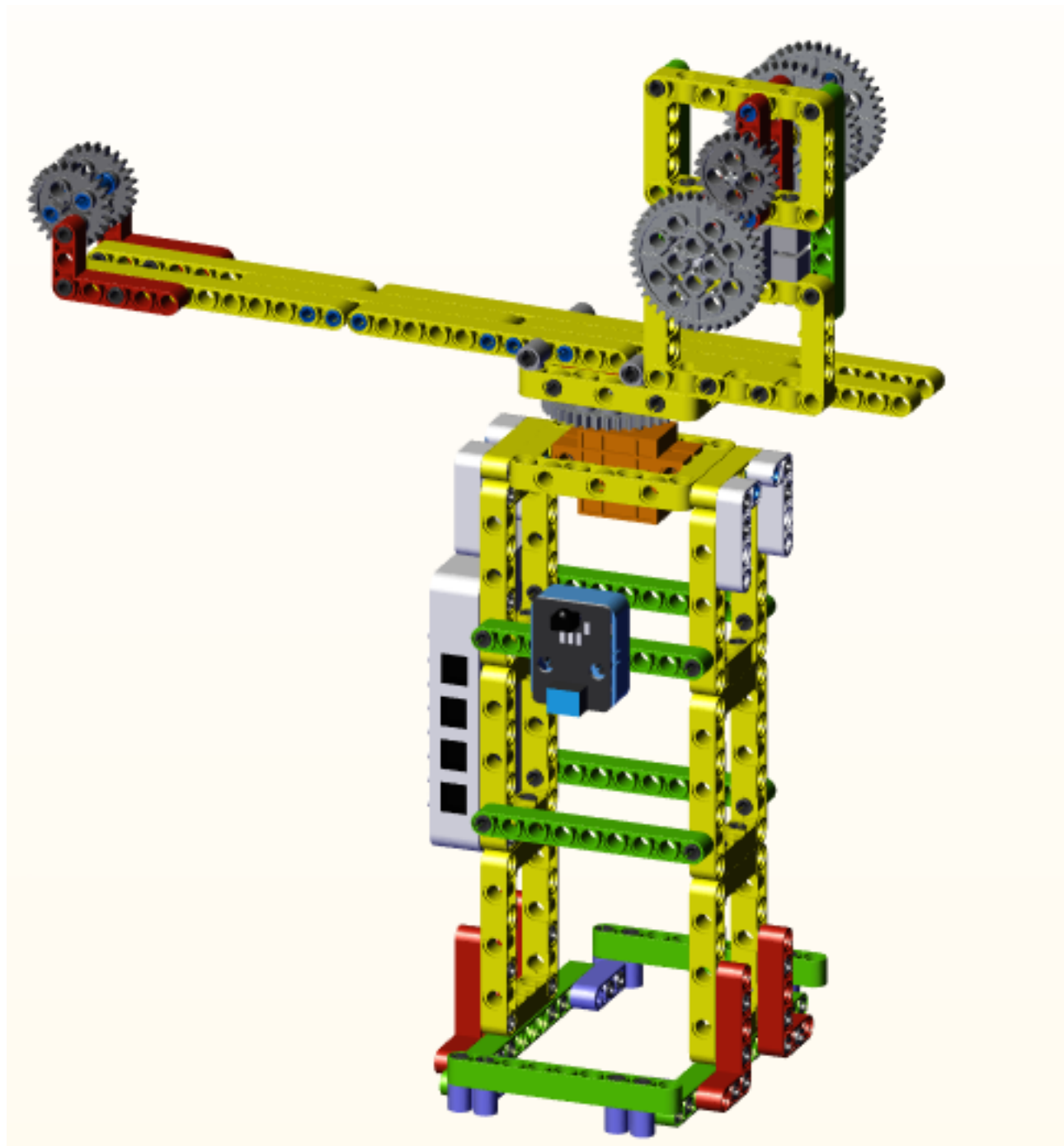


x2



x1







x1



x1

The black wire is tied to the blue latch

